

Symphonie Nr.1

1. SUITE

Ernst Louis Landgraf von Hessen
1667-1739

Tromp.1 in C

Tromp.2 in C

Posaune 1

Posaune 2

13

19

Tromp.1

Tromp.2

Pos.1

Pos.2

26

Symphonie Nr.1 / Ernst Louis Landgraf von Hessen 1667-1739

2. MARSCH

33

Tromp.1
 Tromp.2
 Pos.1
 Pos.2

49

Symphonie Nr.1 / Ernst Louis Landgraf von Hessen 1667-1739

3. BOURLESQUE

57

Symphonie Nr.1 / Ernst Louis Landgraf von Hessen 1667-1739

4. GAVOTTE

90

This system contains measures 90 through 97. It features four staves: two treble staves and two bass staves. The key signature has one flat (B-flat). The melody is primarily in the upper staves, with eighth and sixteenth notes, often beamed together. The lower staves provide harmonic support with chords and single notes. Measure 97 ends with a repeat sign.

98

This system contains measures 98 through 105. It continues the four-staff arrangement. The melody in the upper staves includes some sixteenth-note passages. The bass staves show more complex chordal textures, including some trills or grace notes in measure 102. Measure 105 ends with a repeat sign.

106

This system contains measures 106 through 113. It concludes the piece with a final cadence. The melody in the upper staves features a series of eighth notes leading to a whole note in the final measure. The bass staves provide a steady harmonic foundation. Measure 113 ends with a double bar line and repeat dots.

5. MENUETT

113

Measures 113-128 of the Minuet. The score is in 3/4 time with a key signature of one flat (B-flat). It features four staves: two treble staves and two bass staves. The music is characterized by a steady eighth-note accompaniment in the bass and a melody in the treble. The first staff has a repeat sign at the end of measure 128. The second staff also has a repeat sign at the end of measure 128. The third and fourth staves have repeat signs at the end of measure 128.

Measures 129-144 of the Minuet. The score continues with the same instrumentation and key signature. The melody in the first staff features a series of eighth-note runs. The bass staves provide a consistent accompaniment. The first staff has a repeat sign at the end of measure 144. The second staff has a repeat sign at the end of measure 144. The third and fourth staves have repeat signs at the end of measure 144.

129

Measures 145-160 of the Minuet. The score concludes the piece. The melody in the first staff ends with a final cadence. The bass staves provide a consistent accompaniment. The first staff has a repeat sign at the end of measure 160. The second staff has a repeat sign at the end of measure 160. The third and fourth staves have repeat signs at the end of measure 160.

6. GIGUE

The first system of the 6th Gigue, measures 1-5. The music is in 6/4 time with a key signature of one flat (B-flat). It features four staves: two treble staves and two bass staves. The melody is primarily in the first treble staff, with accompaniment in the other staves. The system concludes with a double bar line and repeat signs.

The second system of the 6th Gigue, measures 142-145. The music continues in 6/4 time with a key signature of one flat. The notation is consistent with the first system. The system concludes with a double bar line and repeat signs.

The third system of the 6th Gigue, measures 146-149. The music continues in 6/4 time with a key signature of one flat. The notation is consistent with the previous systems. The system concludes with a double bar line and repeat signs.

Symphonie Nr.1

1. SUITE

Ernst Louis Landgraf von Hessen
1667-1739

Tromp.1 in C



Symphonie Nr.1 / Ernst Louis Landgraf von Hessen 1667-1739

2. MARSCH

Tromp.1



Symphonie Nr.1 / Ernst Louis Landgraf von Hessen 1667-1739

3. BOURLESQUE

Tromp.1



Symphonie Nr.1 / Ernst Louis Landgraf von Hessen 1667-1739

4. GAVOTTE

81

90

98

106

Symphonie Nr.1 / Ernst Louis Landgraf von Hessen 1667-1739

5. MENUETT

113

129

Symphonie Nr.1 / Ernst Louis Landgraf von Hessen 1667-1739

6. GIGUE

Tromp.1

142

146

Symphonie Nr.1 1. SUITE

Ernst Louis Landgraf von Hessen
1667-1739

Tromp.2 in C



Symphonie Nr.1 / Ernst Louis Landgraf von Hessen 1667-1739

2. MARSCH

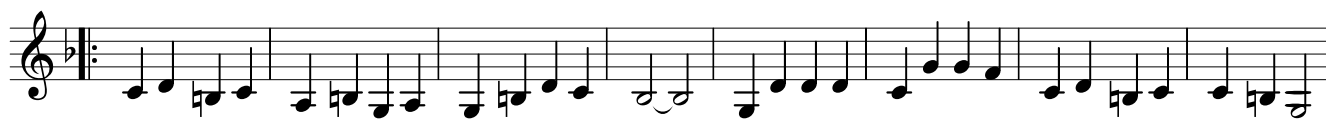
Tromp.2



Symphonie Nr.1 / Ernst Louis Landgraf von Hessen 1667-1739

3. BOURLESQUE

Tromp.2



Symphonie Nr.1 / Ernst Louis Landgraf von Hessen 1667-1739

4. GAVOTTE

81

Tromp.2

90

98

106

Symphonie Nr.1 / Ernst Louis Landgraf von Hessen 1667-1739

5. MENUETT

113

Tromp.2

129

Symphonie Nr.1 / Ernst Louis Landgraf von Hessen 1667-1739

6. GIGUE

142

Tromp.2

146

Symphonie Nr.1

1. SUITE

Ernst Louis Landgraf von Hessen
1667-1739

Posaune 1



Symphonie Nr.1 / Ernst Louis Landgraf von Hessen 1667-1739

2. MARSCH

Pos.1



Symphonie Nr.1 / Ernst Louis Landgraf von Hessen 1667-1739

3. BOURLESQUE

Pos.1



Symphonie Nr.1 / Ernst Louis Landgraf von Hessen 1667-1739

4. GAVOTTE

81

Pos.1



90

98

106

Detailed description: This block contains the musical notation for the Gavotte, measures 81 to 106. It is written for the first position (Pos.1) in bass clef with a key signature of one flat (B-flat). The time signature is common time (C). The notation includes various note values (quarter, eighth, and sixteenth notes), rests, and repeat signs. The first system (measures 81-90) ends with a repeat sign. The second system (measures 91-98) continues the melody. The third system (measures 99-106) concludes the piece with a final repeat sign.

Symphonie Nr.1 / Ernst Louis Landgraf von Hessen 1667-1739

5. MENUETT

113

Pos.1



129

Detailed description: This block contains the musical notation for the Minuet, measures 113 to 129. It is written for the first position (Pos.1) in bass clef with a key signature of one flat (B-flat). The time signature is 3/4. The notation includes various note values (quarter, eighth, and sixteenth notes), rests, and repeat signs. The first system (measures 113-128) ends with a repeat sign. The second system (measures 129-129) continues the melody.

Symphonie Nr.1 / Ernst Louis Landgraf von Hessen 1667-1739

6. GIGUE

Pos.1



142

146

Detailed description: This block contains the musical notation for the Gigue, measures 141 to 146. It is written for the first position (Pos.1) in bass clef with a key signature of one flat (B-flat). The time signature is 6/4. The notation includes various note values (quarter, eighth, and sixteenth notes), rests, and repeat signs. The first system (measures 141-145) ends with a repeat sign. The second system (measures 146-146) continues the melody.

2
Symphonie Nr.1 / Ernst Louis Landgraf von Hessen 1667-1739

4. GAVOTTE

81

Pos.2



90



98



106



Symphonie Nr.1 / Ernst Louis Landgraf von Hessen 1667-1739

5. MENUETT

113

Pos.2



129



Symphonie Nr.1 / Ernst Louis Landgraf von Hessen 1667-1739

6. GIGUE

142

Pos.2



146

