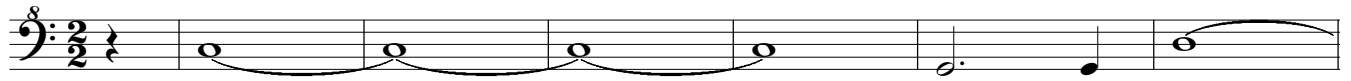


Suite II

Prelude *Lentement*

5



10

Lourdement et marqué



15

20



25



30

35



40



Allemande

Gay



5

(premiere dessus)

(deuxième dessus)



(deuxième dessus)

10



(premiere dessus)

15



20



Rondeau*

* the first strain (*rondeau*) is played twice to begin, then once following each *couplet* (ending with the *rondeau*)

Sarabande
Grave

* the *petite reprise* is not written out in the original

Fantasie

qu'on peu obmettre

5

10

15

20

25

30

35

40

45

50

55

60

65

[*lent.*]

$\frac{3}{4}$

Chaconne

5

10

15

20

25

30

35

40

45

50

55

60

65

70

The image shows a musical score for a Chaconne in 3/4 time, written for bass recorder. The score is presented in ten systems of five staves each. The key signature is one flat (B-flat), and the time signature is 3/4. The piece begins with a treble clef and a key signature of one flat. The music is characterized by a steady, rhythmic pattern of eighth and sixteenth notes, typical of a chaconne. The score includes measure numbers 5, 10, 15, 20, 25, 30, 35, 40, 45, 50, 55, 60, 65, and 70, indicating the progression of the piece. The notation includes various note values, rests, and dynamic markings, such as a 'b' (flat) under a note in the 70th measure. The piece concludes with a final note in the 70th measure.

Musical score for the first section of Dornel: Suite II, bass recorder. The score consists of six staves of music in bass clef. Measure numbers 75, 80, 85, 90, 95, 100, 105, 110, 115, and 120 are indicated in boxes above the staves. The piece concludes with a double bar line and a 2/2 time signature.

Rigodon

Musical score for the Rigodon section. It begins with a double bar line and a 2/2 time signature. The score consists of three staves of music in bass clef. Measure numbers 5, 10, 15, and 20 are indicated in boxes above the staves.

Autre Rigodon

Musical score for the Autre Rigodon section. It begins with a double bar line and a key signature of two flats (B-flat and E-flat). The score consists of five staves of music in bass clef. Measure numbers 25, 30, 35, and 40 are indicated in boxes above the staves. The piece concludes with a double bar line.

On reprendre le 1ere Rigodon pour finir