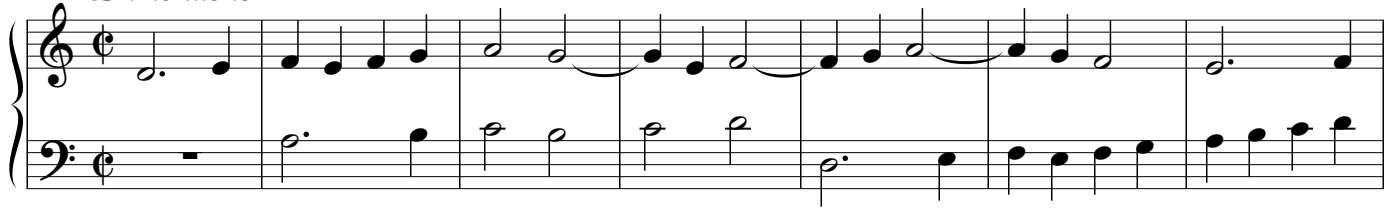


*Seconda Parte del Transilvano - Terzo Libro*  
*Venetia, 1609 & 1622.*

*12 Ricercari*  
*per Organo*

*Girolamo Diruta*  
*(v. 1554 - après 1610)*

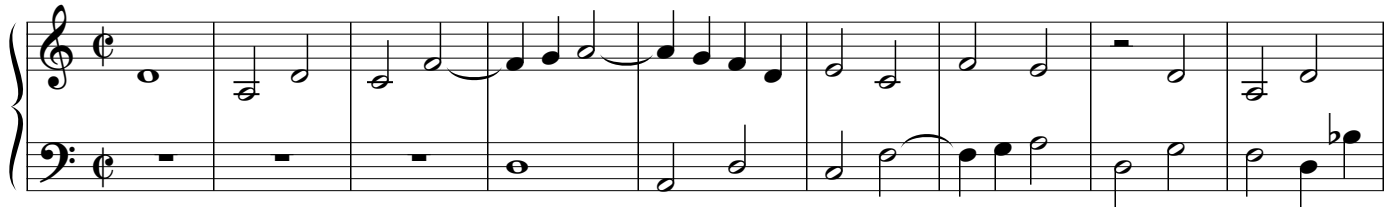
*Primo tuono*



8



*Secondo tuono*



10

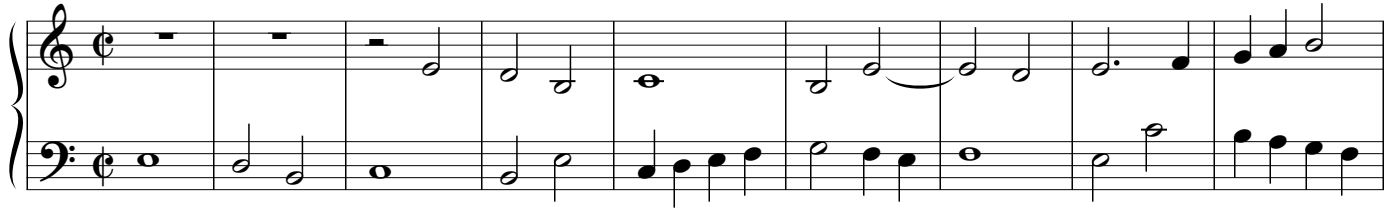


*Terzo tuono*

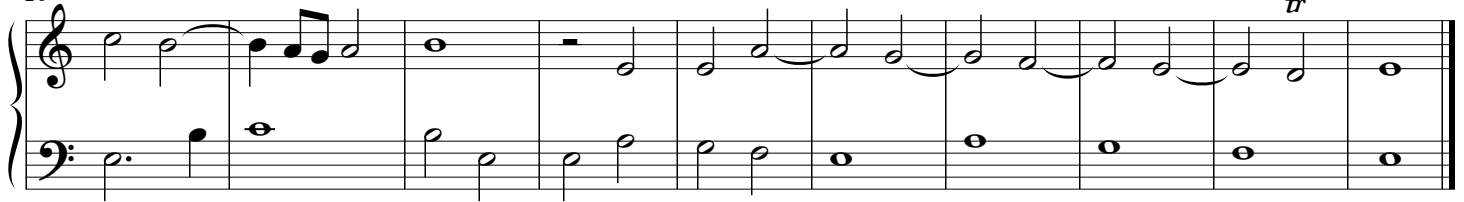


11

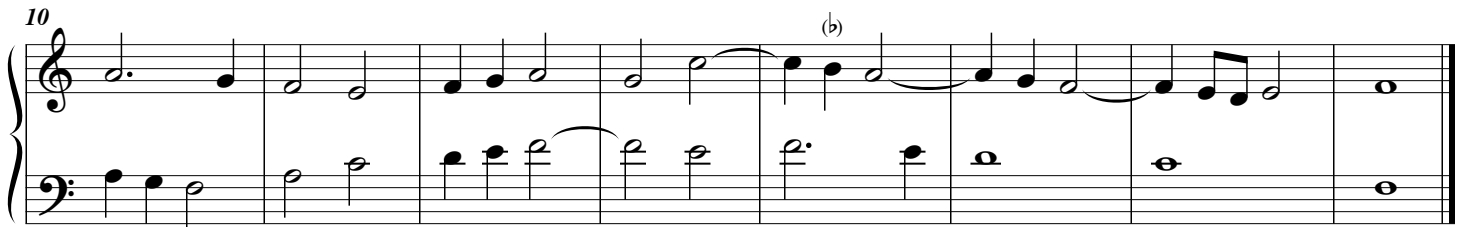
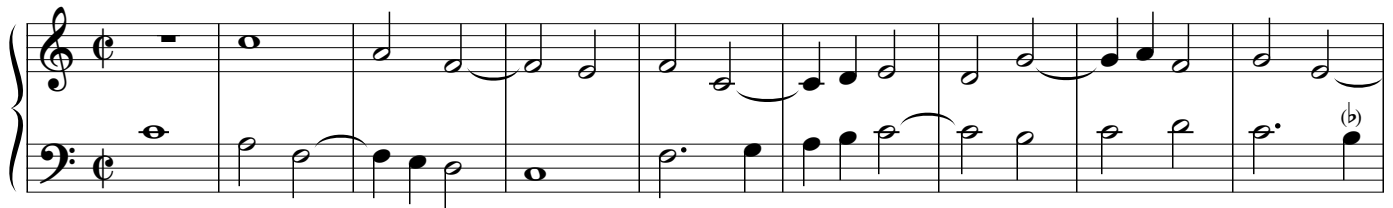


*Quarto tuono*

10

*Quinto tuono*

10

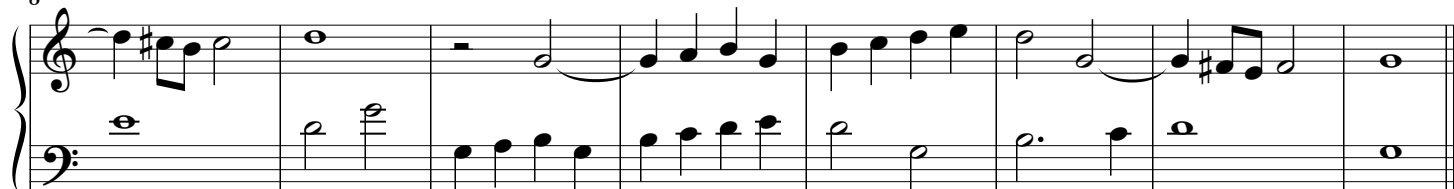
*Sesto tuono*

10

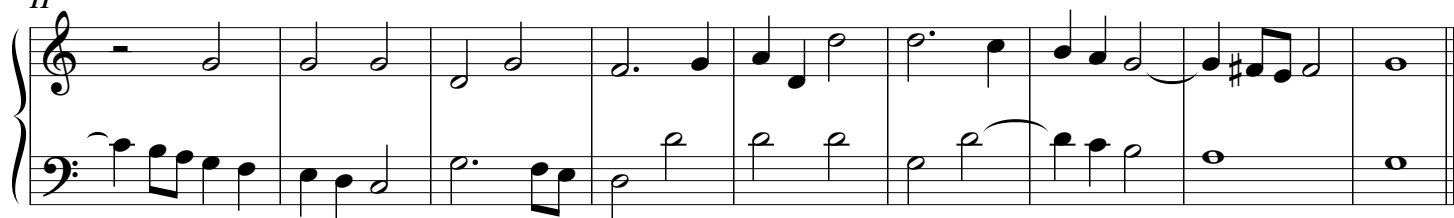
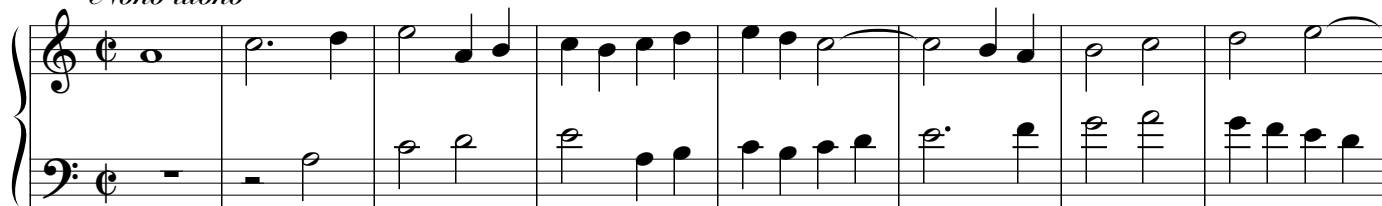


*Settimo tuono*

8

*Ottavo tuono*

11

*Nono tuono*

9



*Decimo tuono*

A musical score for the song "The Rose Tree". It consists of two staves, a treble staff and a bass staff, both in common time (C). The melody is written in the treble staff, and the accompaniment is in the bass staff. The key signature has one flat (B-flat). The melody starts with a whole rest, followed by a half note G4, a quarter note A4, a quarter note B4, a half note C5, a quarter note B4, a quarter note A4, a quarter note G4, and a half note F#4. The bass staff starts with a whole note B2, followed by a half note A2, a half note G2, a quarter note F#2, a quarter note E2, a quarter note D2, a half note C2, a quarter note B1, a quarter note A1, a quarter note G1, and a half note F#1.

9

tr

*Undecimo tuono*

A musical score for the song 'The Rose Tree'. It features a treble and bass staff. The treble staff begins with a treble clef, a common time signature (C), and a key signature of one flat (B-flat). The melody is written in a simple, folk-like style. The bass staff begins with a bass clef and a common time signature (C). The accompaniment is written in a simple, folk-like style. The score consists of 12 measures. The first measure has a whole note in the treble staff (B-flat) and a whole rest in the bass staff. The second measure has a half note in the treble staff (B-flat) and a half note in the bass staff (B-flat). The third measure has a quarter note in the treble staff (B-flat) and a quarter note in the bass staff (B-flat). The fourth measure has a quarter note in the treble staff (B-flat) and a quarter note in the bass staff (B-flat). The fifth measure has a half note in the treble staff (B-flat) and a half note in the bass staff (B-flat). The sixth measure has a whole note in the treble staff (B-flat) and a whole rest in the bass staff. The seventh measure has a half note in the treble staff (B-flat) and a half note in the bass staff (B-flat). The eighth measure has a quarter note in the treble staff (B-flat) and a quarter note in the bass staff (B-flat). The ninth measure has a quarter note in the treble staff (B-flat) and a quarter note in the bass staff (B-flat). The tenth measure has a half note in the treble staff (B-flat) and a half note in the bass staff (B-flat). The eleventh measure has a whole note in the treble staff (B-flat) and a whole rest in the bass staff. The twelfth measure has a half note in the treble staff (B-flat) and a half note in the bass staff (B-flat).

9

tr

*Duodecimo tuono*

A musical score for the song 'The Rose Tree'. It consists of two staves, a treble staff and a bass staff, both in C major and 4/4 time. The melody is written in the treble staff, and the accompaniment is in the bass staff. The key signature has one sharp (F#), and the time signature is 4/4. The melody starts with a whole rest, followed by a half note G4, a quarter note A4, a quarter note B4, a half note C5, a quarter note B4, a quarter note A4, a half note G4, a quarter note F#4, a half note E4, a quarter note D4, a half note C4, and a quarter note B3. The accompaniment starts with a half note G3, a quarter note A3, a quarter note B3, a half note C4, a quarter note B3, a quarter note A3, a half note G3, a quarter note F#3, a half note E3, a quarter note D3, a half note C3, and a quarter note B2.