

Tenor Viol 2

Fantasia a 5

John Coprario (c1575-1626)

$$J = 88$$

The first staff of music is written in bass clef with a key signature of one flat (B-flat) and a time signature of 4/2. It begins with a whole rest followed by a sequence of notes: a half note B-flat, a quarter note A, a quarter note G, a dotted quarter note F, a half note E, a half note D, a quarter note C, a quarter note B-flat, a quarter note A, a quarter note G, a quarter note F, a quarter note E, a quarter note D, a quarter note C, a quarter note B-flat, a quarter note A, and a quarter note G.

4

7

10

13

16

19

23

25

V.S.

28



32



35



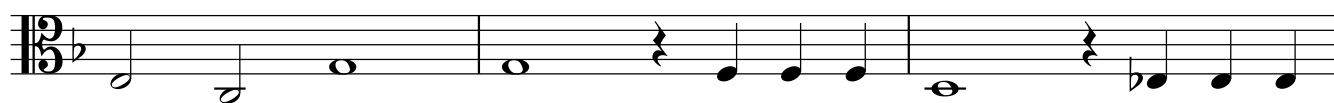
38



41



44



47



49

