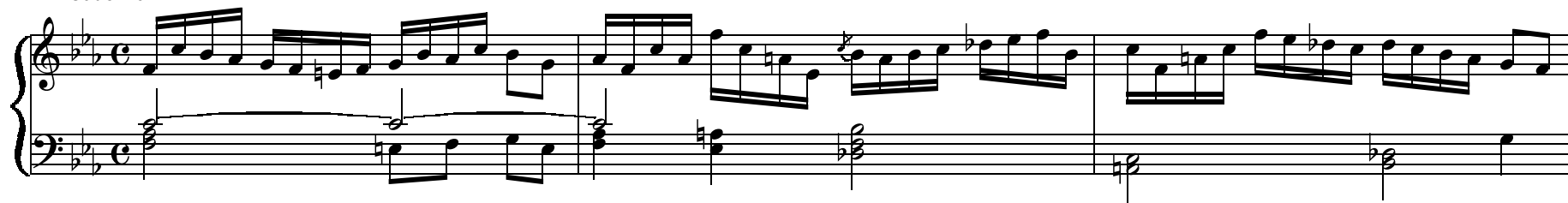


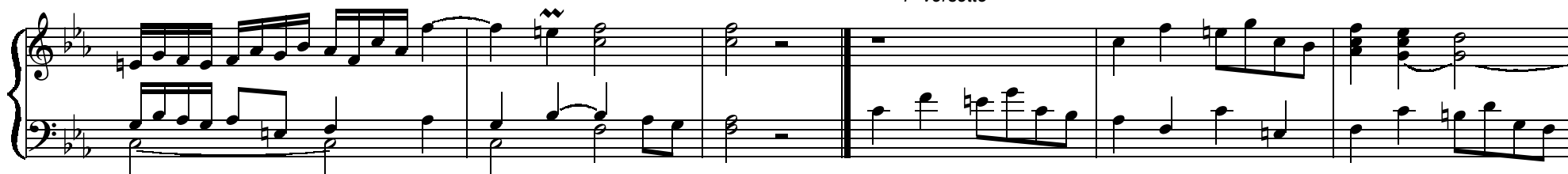
## II. Tono di Fafaut

Gian Domenico Cattenacci  
trascrizione a cura di Paolo Dugoni

Cadenza



1° versetto



2° versetto



3° versetto

Musical score for the 3rd verse. The piece is in B-flat major (two flats) and common time (C). It consists of two staves: a treble staff and a bass staff. The melody in the treble staff begins with a whole rest, followed by a series of eighth and quarter notes. The bass staff provides a steady accompaniment with eighth and quarter notes.

4° versetto

Musical score for the 4th verse. The piece is in B-flat major (two flats) and common time (C). It consists of two staves: a treble staff and a bass staff. The melody in the treble staff begins with a series of eighth and quarter notes, followed by a key signature change to 3/4 time, indicated by a double bar line and the new time signature. The bass staff provides a steady accompaniment with eighth and quarter notes.

Musical score for the 4th verse, continuing the piano accompaniment. The piece is in B-flat major (two flats) and 3/4 time. It consists of two staves: a treble staff and a bass staff. The melody in the treble staff continues with eighth and quarter notes, and the bass staff provides a steady accompaniment with eighth and quarter notes.

Cadenza

Musical score for the Cadenza. The piece is in B-flat major (two flats) and common time (C). It consists of two staves: a treble staff and a bass staff. The melody in the treble staff begins with a series of eighth and quarter notes, and the bass staff provides a steady accompaniment with eighth and quarter notes.