

# "Grand Dialogue"

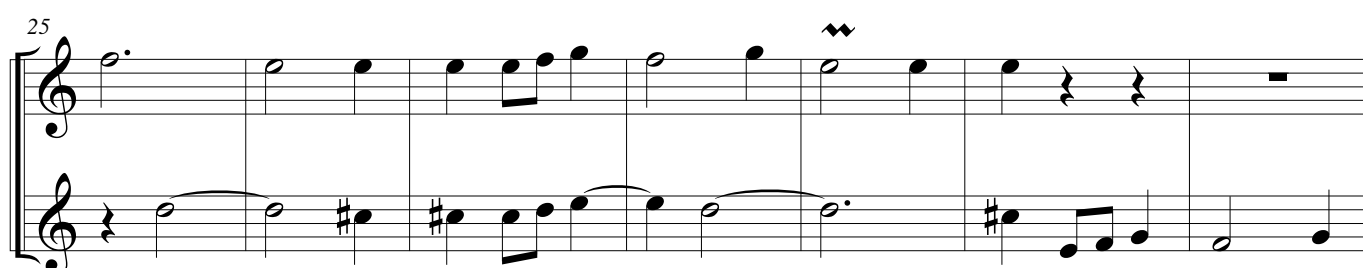
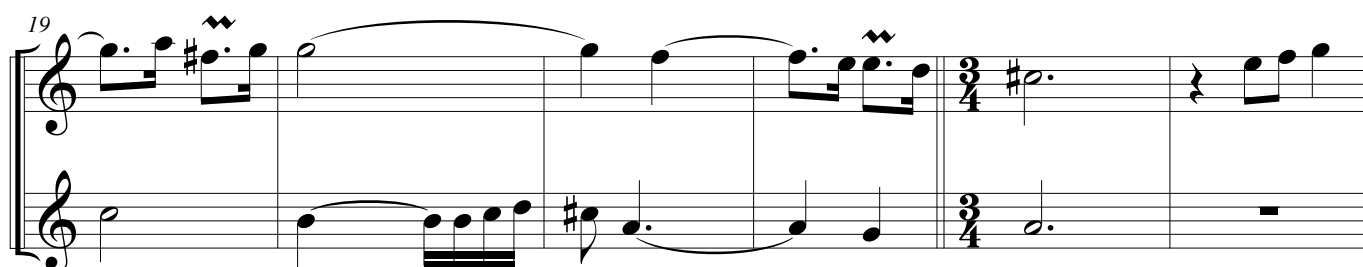
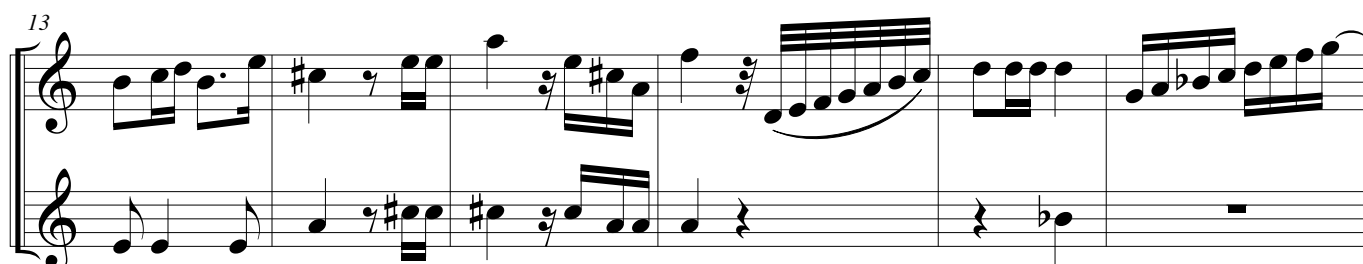
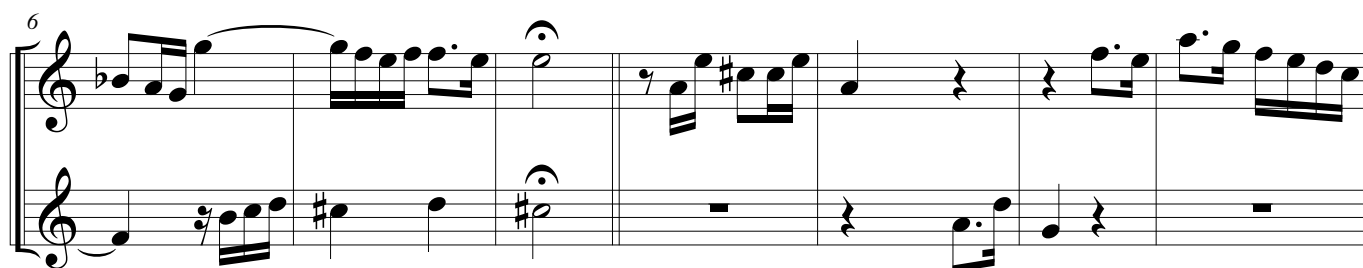
(Suite du Premier Ton - 1.11)

## C trumpets

Maestoso ♩ = 65

Jacques Boyvin (c.1653-1706)

Arr. Michel Rondeau



32

Measures 32-38 of the score. The music is in 2/4 time. The upper staff (treble clef) begins with a whole rest in measure 32, followed by eighth and quarter notes. The lower staff (treble clef) plays a continuous eighth-note accompaniment. Measures 36-38 feature a melodic line in the upper staff with a slur and a fermata over the final note.

39

Measures 39-45 of the score. The upper staff (treble clef) has a melodic line with a slur and a fermata over measures 40-41, followed by a whole rest in measure 42. The lower staff (treble clef) continues with an eighth-note accompaniment. Measure 45 ends with a quarter rest.

46

Measures 46-52 of the score. The upper staff (treble clef) contains a melodic line with various intervals and a final half note. The lower staff (treble clef) provides a steady eighth-note accompaniment throughout the system.

53

Measures 53-58 of the score. The upper staff (treble clef) features a melodic line with a slur and a fermata over measures 54-55, and another slur with a fermata over measures 57-58. The lower staff (treble clef) continues with an eighth-note accompaniment.

59

Measures 59-64 of the score. The upper staff (treble clef) has a melodic line with a slur and a fermata over measures 59-60, and another slur with a fermata over measures 62-63. The lower staff (treble clef) continues with an eighth-note accompaniment. The system concludes with a double bar line in measure 64.