

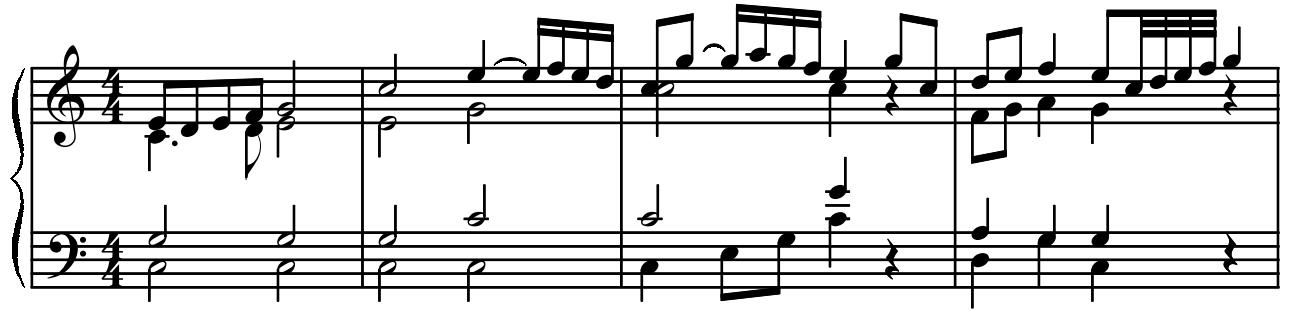
# Ten Sonatas

Organ

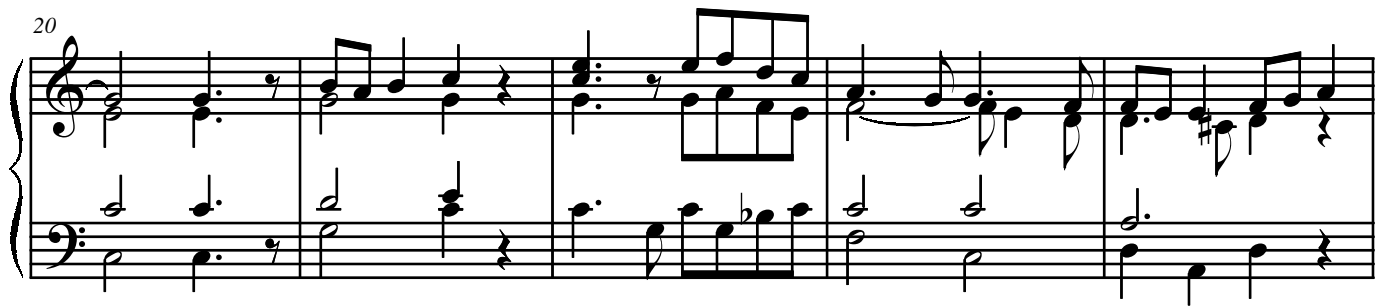
for Natural Trumpet, Sackbutt & Organ

Heinrich Ignaz Franz Biber (1644-1704)

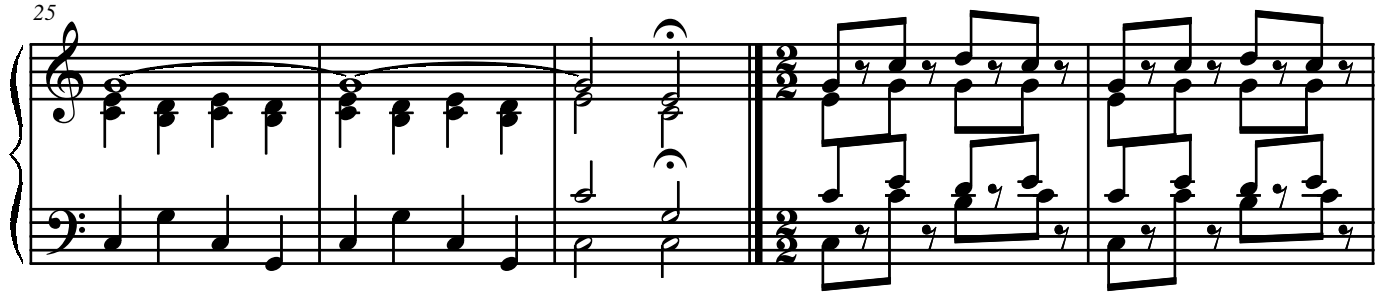
Arr. Michel Rondeau



20



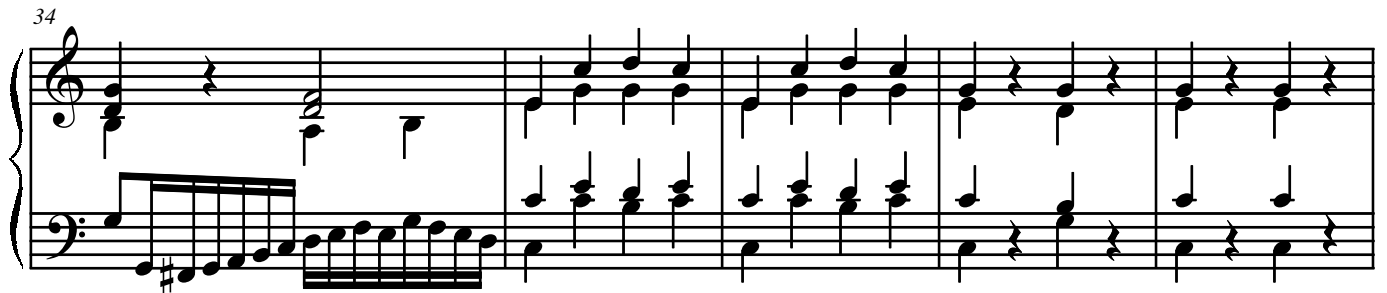
25



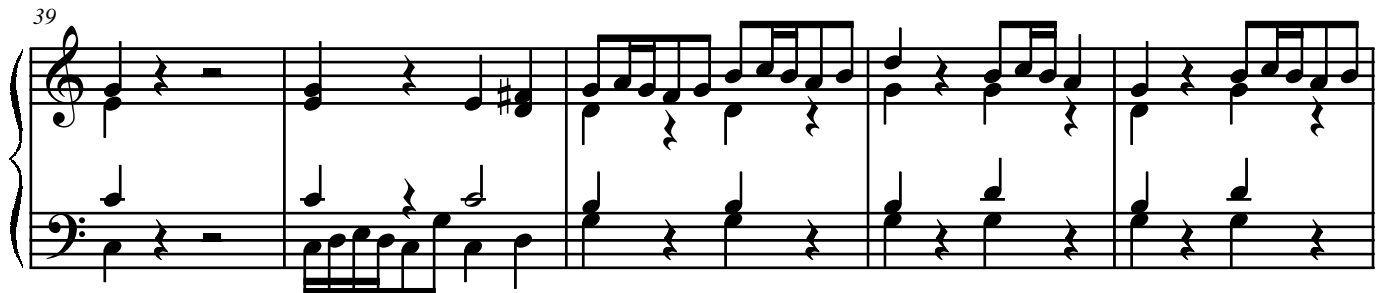
30



34



39



44

Measures 44-48 of a piano sonata. The right hand features a melodic line with eighth-note patterns and rests, while the left hand provides a steady accompaniment of quarter notes. The key signature has one sharp (F#).

49

Measures 49-53 of a piano sonata. The right hand continues with eighth-note patterns, and the left hand maintains a consistent quarter-note accompaniment. The key signature has one sharp (F#).

54

Measures 54-58 of a piano sonata. Measures 54-57 show the continuation of the eighth-note melody in the right hand and quarter-note accompaniment in the left hand. Measure 58 is a double bar line. The key signature changes to natural (F) in measure 59.

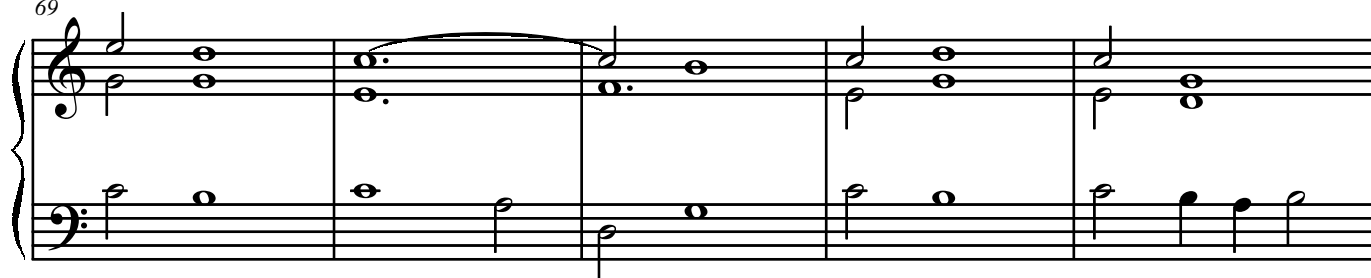
59

Measures 59-63 of a piano sonata. The right hand features a melodic line with half notes and quarter notes, some with slurs. The left hand provides a steady accompaniment of quarter notes. The key signature is natural (F).

64

Measures 64-68 of a piano sonata. The right hand continues with a melodic line of half notes and quarter notes. The left hand maintains a consistent quarter-note accompaniment. The key signature is natural (F).

69



74



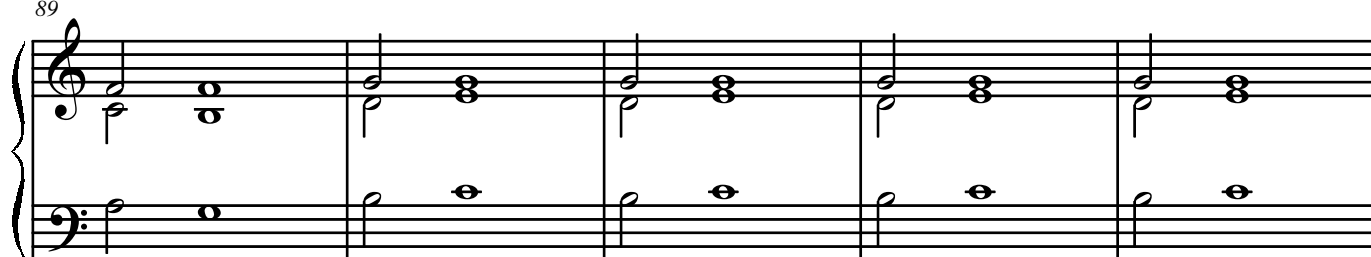
79



84



89



94

Measures 94-98. The score is in 3/2 time. Measures 94-97 consist of a series of chords in the right hand and single notes in the left hand. Measure 98 is a repeat sign.

99

Measures 99-103. The score is in 3/2 time. Measures 99-100 are marked *rit.*. Measures 101-102 are in 4/4 time. Measure 103 is in 3/2 time.

104

Measures 104-108. The score is in 3/2 time. Measures 104-105 are in 3/2 time. Measures 106-107 are in 4/4 time. Measure 108 is in 3/2 time.

109

Measures 109-113. The score is in 3/2 time. Measures 109-110 are in 3/2 time. Measures 111-112 are in 4/4 time. Measure 113 is in 3/2 time.

114

Measures 114-118. The score is in 3/2 time. Measures 114-115 are in 3/2 time. Measures 116-117 are in 4/4 time. Measure 118 is in 3/2 time.

119

124

130

136

142

149

*rit.*

155

*rit.*

160

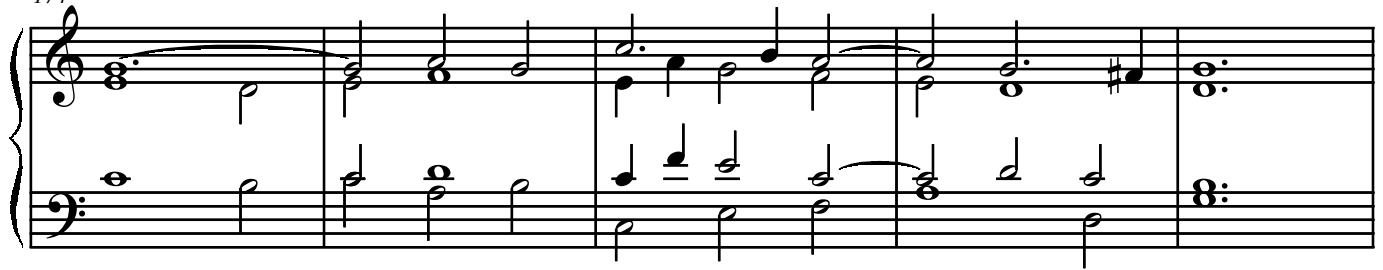
164

*rit.*

*rit.*

169

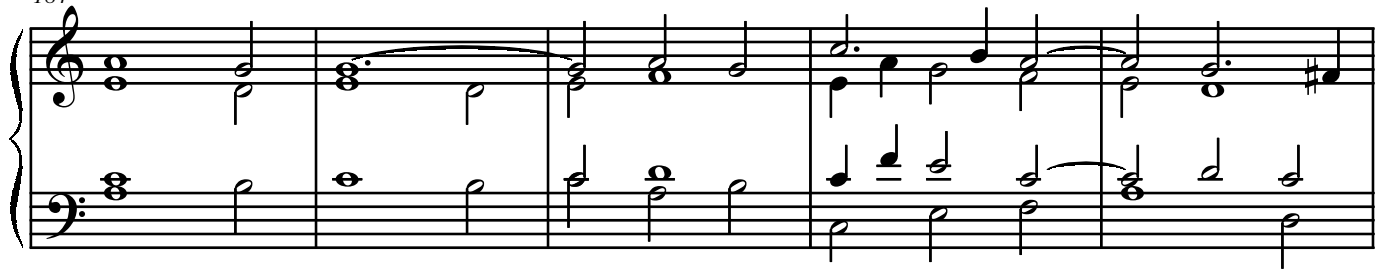
174



179



184



189



194





199

Measures 199-203. The piece is in 4/4 time. Measures 199-201 feature a sustained chord in the right hand and a single note in the left hand. At measure 202, the right hand begins a descending eighth-note scale, and the left hand plays a steady eighth-note accompaniment. Measure 203 continues this pattern.

204

Measures 204-208. The right hand plays a series of chords, while the left hand continues with eighth-note accompaniment. The texture is consistent throughout this five-measure segment.

209

Measures 209-212. Measure 209 features a sixteenth-note scale in the right hand. Measure 210 continues with a similar scale. Measure 211 includes a *rit.* (ritardando) marking and a *2X Fine* instruction. Measure 212 concludes the section with a final chord.

*rit.*

213

Measures 213-216. The right hand plays a series of chords, while the left hand continues with eighth-note accompaniment. The texture is consistent throughout this four-measure segment.

217

Measures 217-220. The right hand plays a series of chords, while the left hand continues with eighth-note accompaniment. The texture is consistent throughout this four-measure segment.

221

Measures 221-224. Treble staff: Measure 221 has a dotted quarter note G4, eighth note A4, quarter note B4, and quarter note C5. Measure 222 has quarter notes D5, E5, F5, and G5. Measure 223 has quarter notes G5, F5, E5, and D5. Measure 224 has quarter notes C5, B4, A4, and G4. Bass staff: Measure 221 has a whole note chord of G2 and B2. Measure 222 has a whole note chord of D3 and F3. Measure 223 has a whole note chord of A2 and C3. Measure 224 has a whole note chord of G2 and B2.

225

Measures 225-228. Treble staff: Measure 225 has quarter notes G4, A4, B4, and C5. Measure 226 has quarter notes D5, E5, F5, and G5. Measure 227 has quarter notes G5, F5, E5, and D5. Measure 228 has quarter notes C5, B4, A4, and G4. Bass staff: Measure 225 has a whole note chord of G2 and B2. Measure 226 has a whole note chord of D3 and F3. Measure 227 has a whole note chord of A2 and C3. Measure 228 has a whole note chord of G2 and B2.

229

Measures 229-233. Treble staff: Measure 229 has a dotted quarter note G4, eighth note A4, quarter note B4, and quarter note C5. Measure 230 has quarter notes D5, E5, F5, and G5. Measure 231 has quarter notes G5, F5, E5, and D5. Measure 232 has quarter notes C5, B4, A4, and G4. Measure 233 has quarter notes G4, F4, E4, and D4. Bass staff: Measure 229 has a whole note chord of G2 and B2. Measure 230 has a whole note chord of D3 and F3. Measure 231 has a whole note chord of A2 and C3. Measure 232 has a whole note chord of G2 and B2. Measure 233 has a whole note chord of G2 and B2.

234

Measures 234-237. Treble staff: Measure 234 has a dotted quarter note G4, eighth note A4, quarter note B4, and quarter note C5. Measure 235 has quarter notes D5, E5, F5, and G5. Measure 236 has quarter notes G5, F5, E5, and D5. Measure 237 has quarter notes C5, B4, A4, and G4. Bass staff: Measure 234 has a whole note chord of G2 and B2. Measure 235 has a whole note chord of D3 and F3. Measure 236 has a whole note chord of A2 and C3. Measure 237 has a whole note chord of G2 and B2.

238

Measures 238-241. Treble staff: Measure 238 has a dotted quarter note G4, eighth note A4, quarter note B4, and quarter note C5. Measure 239 has quarter notes D5, E5, F5, and G5. Measure 240 has quarter notes G5, F5, E5, and D5. Measure 241 has quarter notes C5, B4, A4, and G4. Bass staff: Measure 238 has a whole note chord of G2 and B2. Measure 239 has a whole note chord of D3 and F3. Measure 240 has a whole note chord of A2 and C3. Measure 241 has a whole note chord of G2 and B2. The word "rit." is written below the bass staff in measures 238 and 239.

244

Measures 244-248. The right hand features a series of chords and eighth-note patterns, while the left hand plays a steady eighth-note accompaniment.

249

Measures 249-254. Measure 254 includes a trill (tr) on the right hand. The left hand continues with eighth-note accompaniment.

255

Measures 255-261. Measures 255 and 256 are marked with a '2' above the right hand, indicating a second ending or a specific fingering. The right hand has a more active melodic line, while the left hand remains accompanimental.

262

Measures 262-267. Measure 267 includes a trill (tr) on the right hand. The left hand continues with eighth-note accompaniment.

268

Measures 268-273. Measures 268 and 269 are marked with a '2' above the right hand. The right hand has a more active melodic line, while the left hand remains accompanimental.

275

Measures 275-279. The treble staff features a series of eighth-note chords and single notes, while the bass staff plays a steady eighth-note accompaniment. The music concludes with a final chord in the treble and a sustained note in the bass.

280

Measures 280-283. The treble staff contains sustained chords, with a *rit.* marking above the final two measures. The bass staff features a melodic line with a slur over measures 281 and 282, and a *rit.* marking below the final two measures. The piece ends with a double bar line.