

Sonata XII

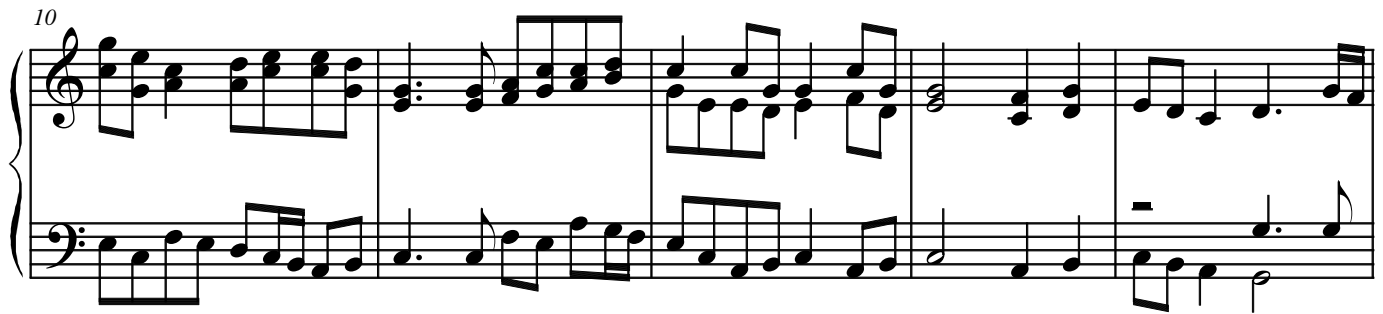
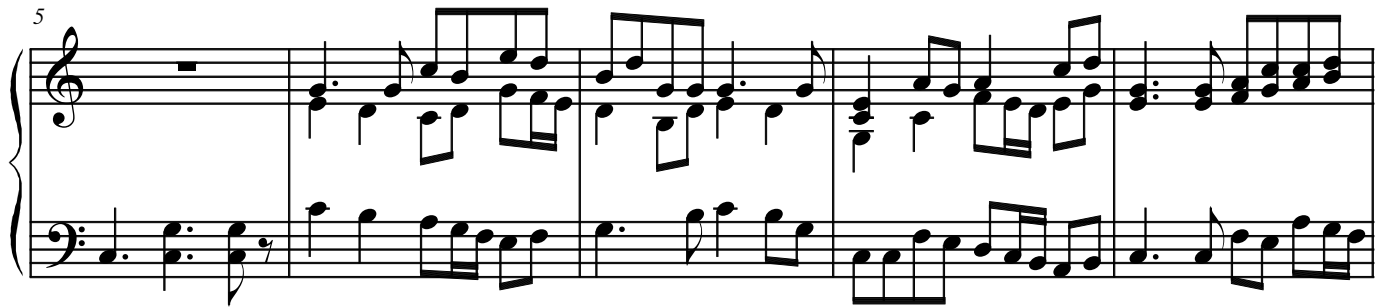
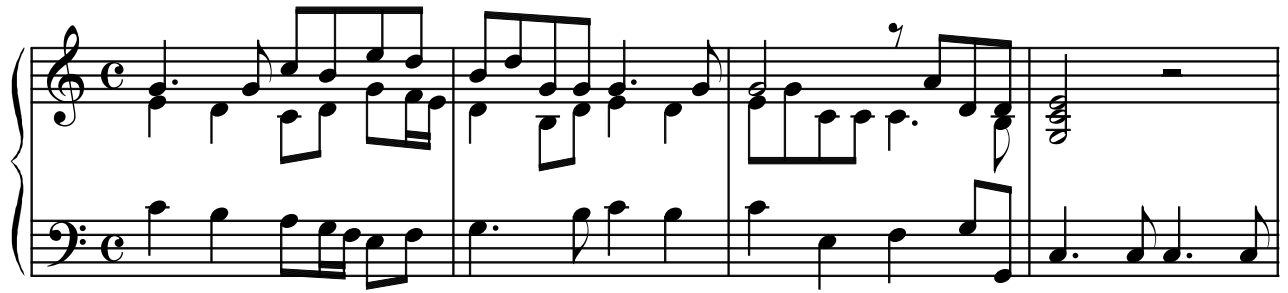
Organ

for Brass, Organ & Timpany

Henrich Ignaz Franz von Biber (1644-1704)

Arr. Michel Rondeau

Allegro (♩ = circa 105)



Sonata XII Organ

23

Measures 23-26 of Sonata XII Organ. The piece is in 2/4 time. Measure 23 features a treble staff with a dotted quarter note G4, an eighth note A4, and a quarter note B4, with a half note D5 in the bass staff. Measure 24 continues with a dotted quarter note C5, an eighth note D5, and a quarter note E5 in the treble, and a half note F5 in the bass. Measure 25 has a dotted quarter note F5, an eighth note G5, and a quarter note A5 in the treble, and a half note B5 in the bass. Measure 26 begins with a dotted quarter note B5, an eighth note C6, and a quarter note D6 in the treble, and a half note E6 in the bass.

27

Measures 27-30 of Sonata XII Organ. Measure 27 has a dotted quarter note E6, an eighth note F6, and a quarter note G6 in the treble, and a half note A6 in the bass. Measure 28 has a dotted quarter note A6, an eighth note B6, and a quarter note C7 in the treble, and a half note D7 in the bass. Measure 29 has a dotted quarter note C7, an eighth note D7, and a quarter note E7 in the treble, and a half note F7 in the bass. Measure 30 has a dotted quarter note F7, an eighth note G7, and a quarter note A7 in the treble, and a half note B7 in the bass.

31

Andante (♩ = circa 65)

Measures 31-36 of Sonata XII Organ. Measure 31 has a dotted quarter note B7, an eighth note C8, and a quarter note D8 in the treble, and a half note E8 in the bass. Measure 32 has a dotted quarter note E8, an eighth note F8, and a quarter note G8 in the treble, and a half note A8 in the bass. Measure 33 has a dotted quarter note F8, an eighth note G8, and a quarter note A8 in the treble, and a half note B8 in the bass. Measure 34 has a dotted quarter note A8, an eighth note B8, and a quarter note C9 in the treble, and a half note D9 in the bass. Measure 35 has a dotted quarter note B8, an eighth note C9, and a quarter note D9 in the treble, and a half note E9 in the bass. Measure 36 has a dotted quarter note C9, an eighth note D9, and a quarter note E9 in the treble, and a half note F9 in the bass.

37

Measures 37-41 of Sonata XII Organ. Measure 37 has a dotted quarter note F9, an eighth note G9, and a quarter note A9 in the treble, and a half note B9 in the bass. Measure 38 has a dotted quarter note A9, an eighth note B9, and a quarter note C10 in the treble, and a half note D10 in the bass. Measure 39 has a dotted quarter note B9, an eighth note C10, and a quarter note D10 in the treble, and a half note E10 in the bass. Measure 40 has a dotted quarter note C10, an eighth note D10, and a quarter note E10 in the treble, and a half note F10 in the bass. Measure 41 has a dotted quarter note D10, an eighth note E10, and a quarter note F10 in the treble, and a half note G10 in the bass.

42

Measures 42-45 of Sonata XII Organ. Measure 42 has a dotted quarter note E10, an eighth note F10, and a quarter note G10 in the treble, and a half note A10 in the bass. Measure 43 has a dotted quarter note F10, an eighth note G10, and a quarter note A10 in the treble, and a half note B10 in the bass. Measure 44 has a dotted quarter note G10, an eighth note A10, and a quarter note B10 in the treble, and a half note C11 in the bass. Measure 45 has a dotted quarter note A10, an eighth note B10, and a quarter note C11 in the treble, and a half note D11 in the bass.

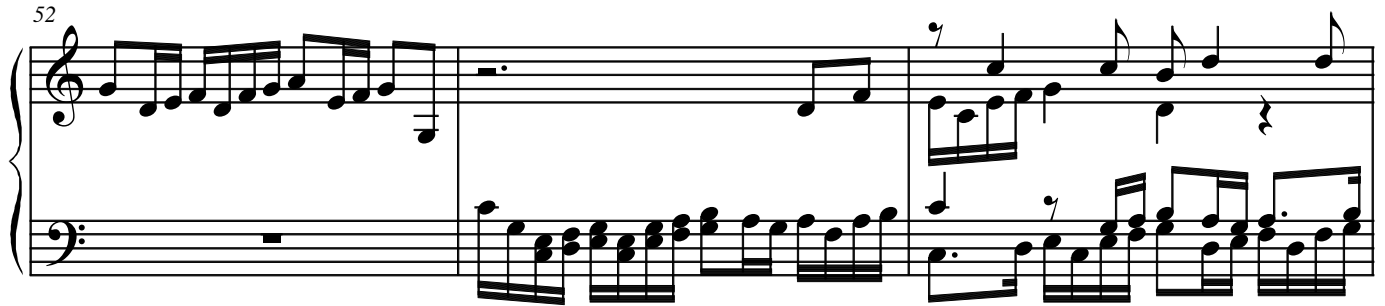
Sonata XII Organ
Allegro (♩ = circa 115)

3

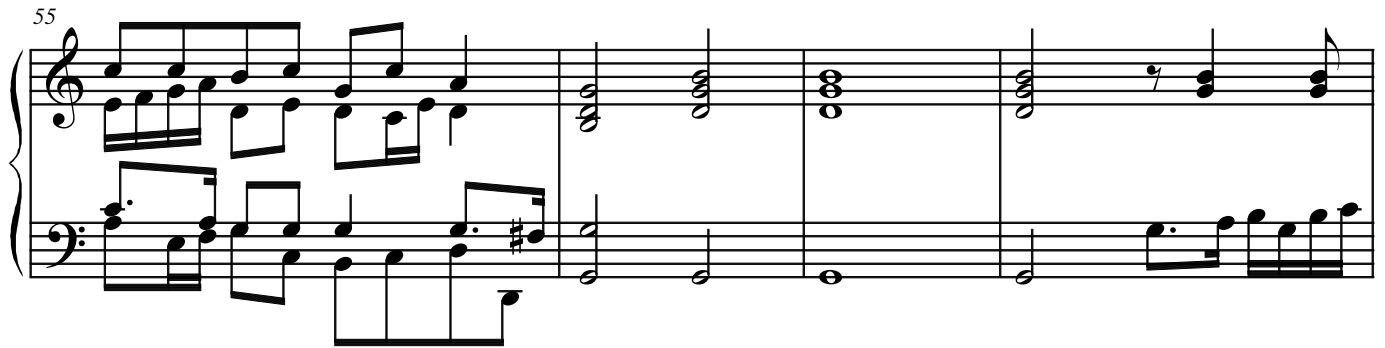
47



52



55



59



63



Sonata XII Organ

4
67

This system contains measures 67 through 70. Measure 67 features a treble staff with a half note G4, a quarter note F#4, and a half note E4, with a bass staff accompaniment of a half note G3 and a half note F#3. Measure 68 has a treble staff with a half note D5 and a half note C#5, and a bass staff with a half note G3 and a half note F#3. Measure 69 is a complex measure with a treble staff containing a half note G4, a quarter note F#4, and a half note E4, and a bass staff with a half note G3 and a half note F#3. Measure 70 has a treble staff with a half note D5 and a half note C#5, and a bass staff with a half note G3 and a half note F#3.

70

This system contains measures 71 through 73. Measure 71 has a treble staff with a half note G4, a quarter note F#4, and a half note E4, and a bass staff with a half note G3 and a half note F#3. Measure 72 has a treble staff with a half note D5 and a half note C#5, and a bass staff with a half note G3 and a half note F#3. Measure 73 has a treble staff with a half note G4, a quarter note F#4, and a half note E4, and a bass staff with a half note G3 and a half note F#3.

73

This system contains measures 74 through 77. Measure 74 has a treble staff with a half note G4, a quarter note F#4, and a half note E4, and a bass staff with a half note G3 and a half note F#3. Measure 75 has a treble staff with a half note D5 and a half note C#5, and a bass staff with a half note G3 and a half note F#3. Measure 76 has a treble staff with a half note G4, a quarter note F#4, and a half note E4, and a bass staff with a half note G3 and a half note F#3. Measure 77 has a treble staff with a half note D5 and a half note C#5, and a bass staff with a half note G3 and a half note F#3.

78

Adagio (♩. = circa 65)

This system contains measures 78 through 81. Measure 78 has a treble staff with a half note G4, a quarter note F#4, and a half note E4, and a bass staff with a half note G3 and a half note F#3. Measure 79 has a treble staff with a half note D5 and a half note C#5, and a bass staff with a half note G3 and a half note F#3. Measure 80 has a treble staff with a half note G4, a quarter note F#4, and a half note E4, and a bass staff with a half note G3 and a half note F#3. Measure 81 has a treble staff with a half note D5 and a half note C#5, and a bass staff with a half note G3 and a half note F#3.

82

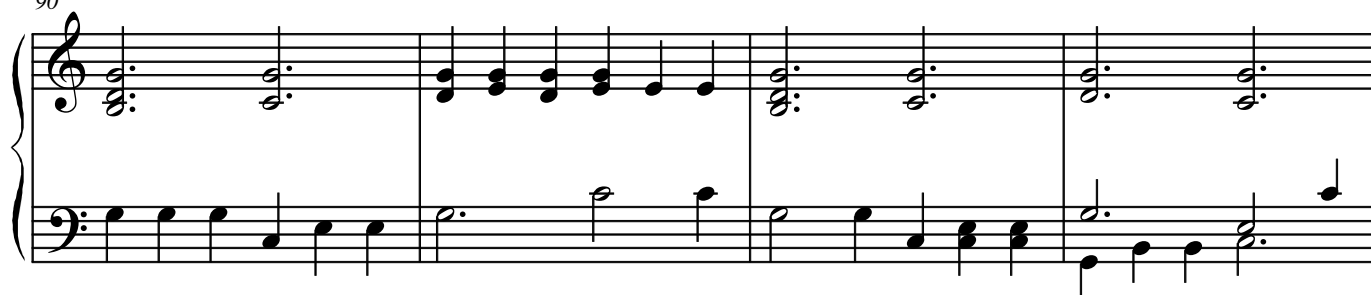
This system contains measures 82 through 85. Measure 82 has a treble staff with a half note G4, a quarter note F#4, and a half note E4, and a bass staff with a half note G3 and a half note F#3. Measure 83 has a treble staff with a half note D5 and a half note C#5, and a bass staff with a half note G3 and a half note F#3. Measure 84 has a treble staff with a half note G4, a quarter note F#4, and a half note E4, and a bass staff with a half note G3 and a half note F#3. Measure 85 has a treble staff with a half note D5 and a half note C#5, and a bass staff with a half note G3 and a half note F#3.

Presto (♩. = circa 75)

86



90



94



98



102

