

London - 1724

# SONATA No.1 in d

*For Flute/Violin, Harpsichord & Bass*

**Cello/Bass**

Francesco Barsanti (1690-1772)

Arr. Michel Rondeau

1 - Adagio ♩ = 60

Measures 1-18 of the first movement, Adagio. The music is written in bass clef with a key signature of one flat (B-flat) and a common time signature (C). The tempo is marked '1 - Adagio' with a quarter note equal to 60 beats per minute. The melody consists of eighth and sixteenth notes, with some accidentals (sharps and naturals) appearing in measures 10-18. Measure 18 ends with a double bar line and a 4/2 time signature change.

Measures 19-42 of the first movement, Allegro. The tempo changes to '2 - Allegro' at measure 19. The time signature changes to 4/2. The music is written in bass clef with a key signature of one flat (B-flat). The melody features a mix of eighth, sixteenth, and quarter notes, with some rests and accidentals. Measure 42 ends with a double bar line.

40



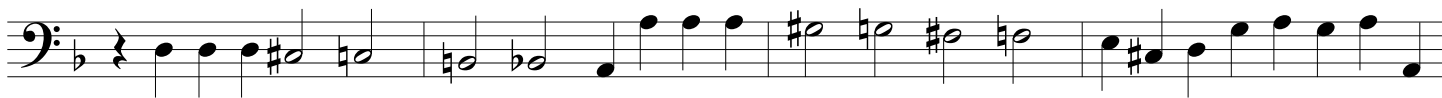
44



48



52



56



60

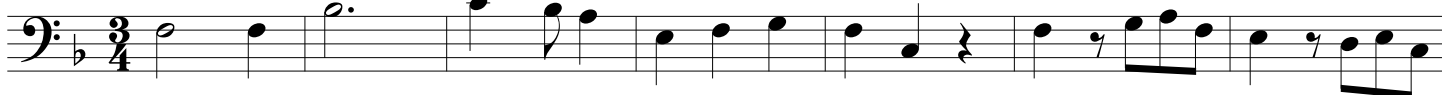


63



67

3 - Grave



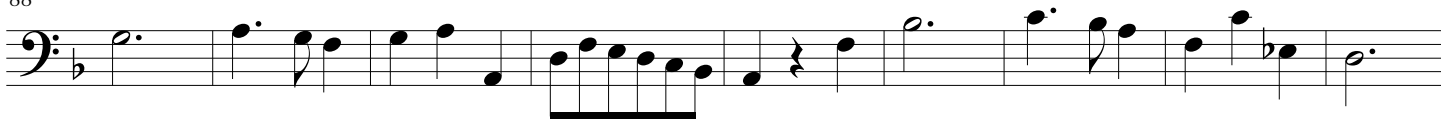
74



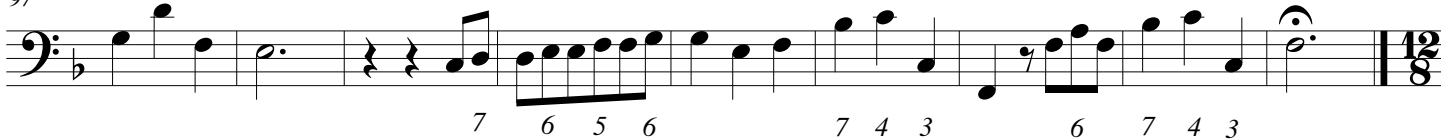
81



88



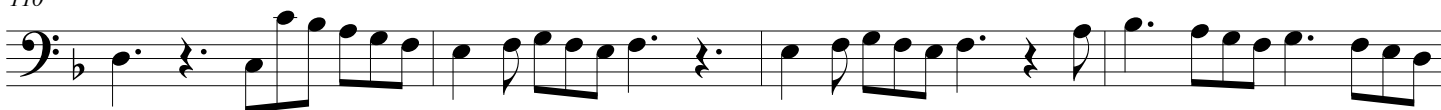
97



106

**4 - Allegro Assai**

110



114



118



122



125



128



132



135



139



143



147



151

