

II

Francesco Barsanti(1690-1772)

Arr. Michel Rondeau

Non tanto allegro (♩. = circa 70)

Recorder

Harpichord

This system contains the first four measures of the piece. The Recorder part begins with a treble clef, a key signature of two flats (B-flat and E-flat), and a 12/8 time signature. It features a series of eighth-note patterns, often beamed in groups of three. The Harpichord part is written for both treble and bass staves. The right hand provides harmonic support with chords and moving lines, while the left hand plays a steady eighth-note accompaniment.

Rec.

Hpschd.

This system covers measures 5 through 8. The Recorder part continues with its eighth-note patterns, including a triplet of eighth notes in measure 6. The Harpichord part maintains its accompaniment, with the right hand showing more complex rhythmic figures and the left hand providing a consistent bass line.

Rec.

Hpschd.

This system contains the final four measures of the piece, from measure 9 to 12. The Recorder part concludes with a final melodic phrase. The Harpichord part ends with a series of chords and a final bass line. The score is marked with measure numbers 3, 5, and 7 at the beginning of their respective systems.

2
7

Rec.

Hpschd.

II

10

Rec.

Hpschd.

12

Rec.

Hpschd.

14

Rec.

Hpschd.

16 II 3

Rec.

Hpschd.

18

Rec.

Hpschd.

20

Rec.

Hpschd.

22

Rec.

Hpschd.

4

II

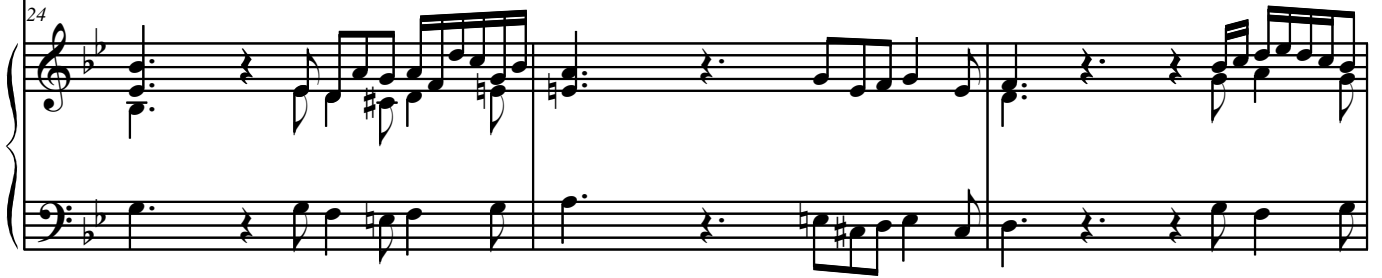
Rec.

24



Hpschd.

24



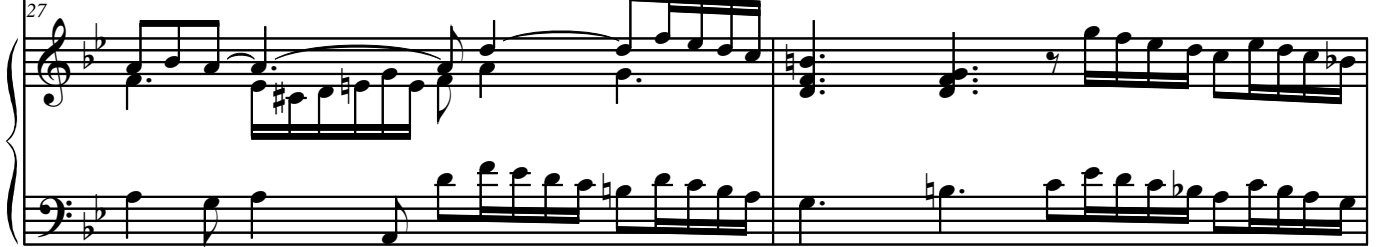
Rec.

27



Hpschd.

27



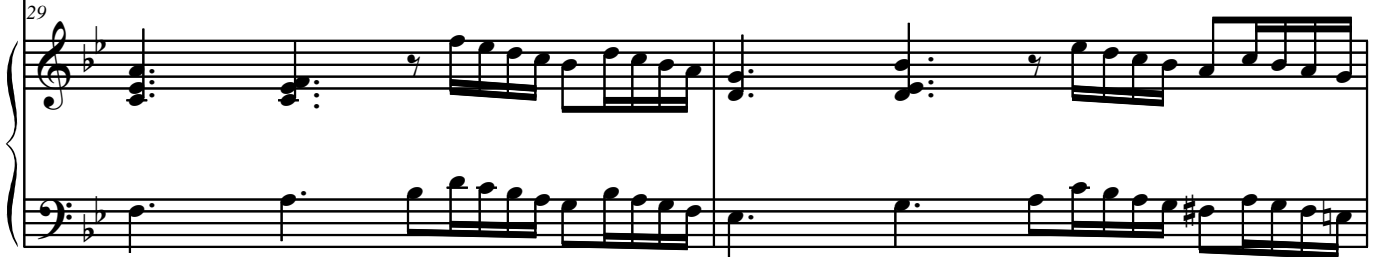
Rec.

29



Hpschd.

29



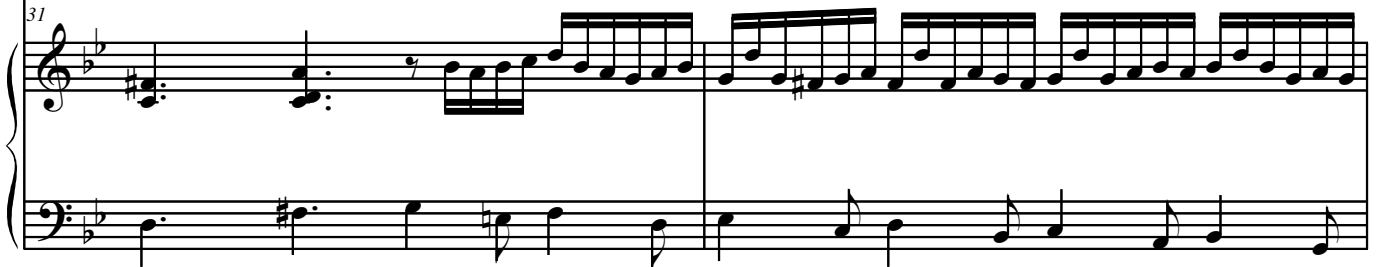
Rec.

31



Hpschd.

31



33 II 5

Rec.

Hpschd.

35

Rec.

Hpschd.

37

Rec.

Hpschd.

39

Rec.

Hpschd.

6

II

Rec. 41

Hpschd. 41

This system contains measures 41 and 42. The Recorder part (top staff) begins with a whole rest in measure 41, followed by a series of eighth and sixteenth notes in measure 42, including a trill. The Harpsichord part (bottom staves) features a rhythmic pattern of eighth notes in the right hand and a bass line in the left hand. A repeat sign is at the end of measure 42.

Rec. 43

Hpschd. 43

This system contains measures 43, 44, and 45. The Recorder part (top staff) has a continuous melodic line with many sixteenth notes. The Harpsichord part (bottom staves) provides harmonic support with chords and moving lines in both hands. A repeat sign is at the end of measure 45.

Rec. 46

Hpschd. 46

This system contains measures 46 and 47. The Recorder part (top staff) concludes with a trill in measure 46 and a final note in measure 47. The Harpsichord part (bottom staves) features a dense texture of sixteenth notes in the right hand and a steady bass line in the left hand. A repeat sign is at the end of measure 47.