

# ARIA

Mein Jesus will es tun, er will dein Kreuz versüssen  
(from Kantate BWV 72)

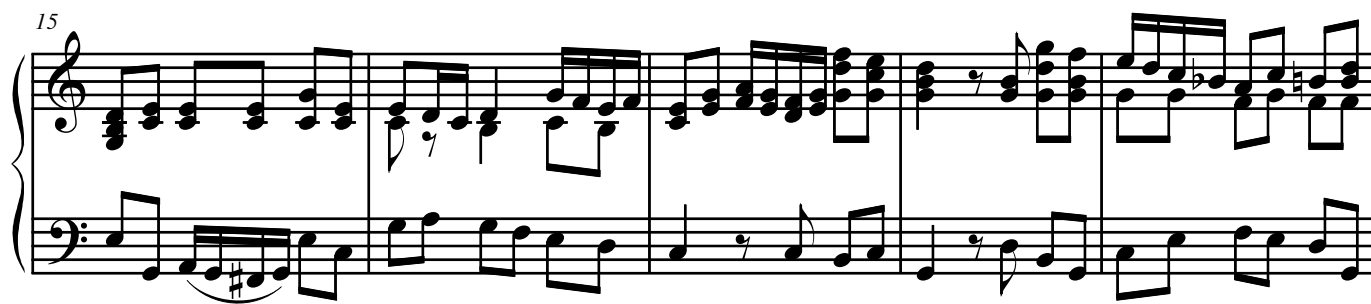
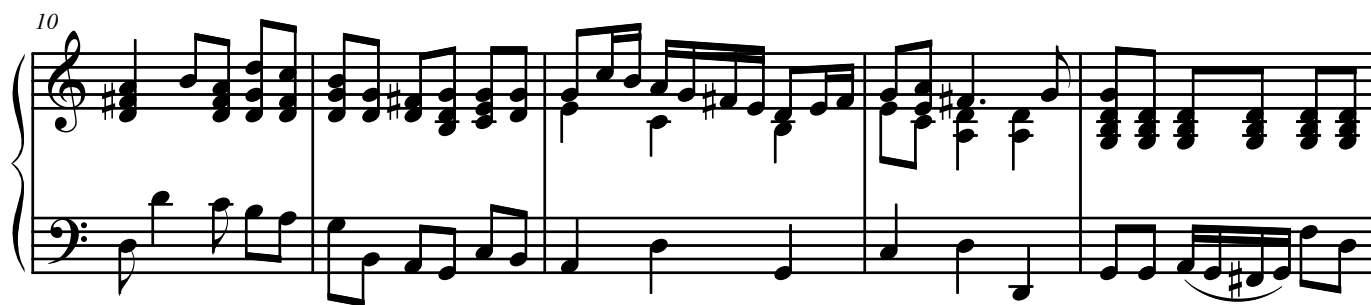
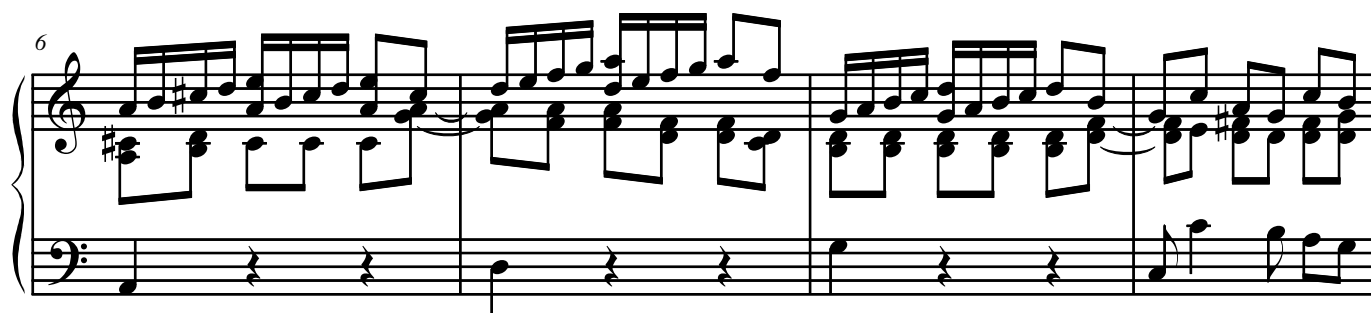
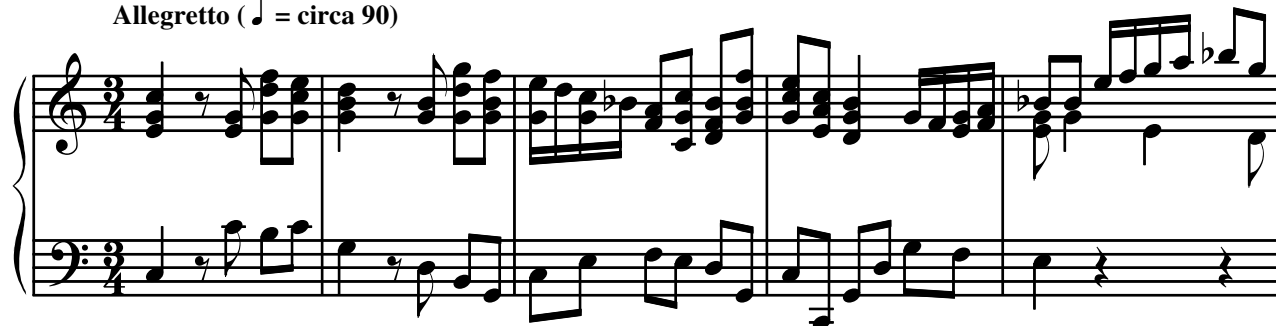
Organ

for Soprano, Trumpet & Organ

Johann Sebastian Bach (1685-1750)

Arr. Michel Rondeau

Allegretto (♩ = circa 90)



ARIA Organ

2

20

Measures 20-23 of the organ piece. The right hand features a complex melodic line with many beamed sixteenth and thirty-second notes, while the left hand provides a steady accompaniment of eighth notes.

24

Measures 24-27. The right hand continues with rapid sixteenth-note passages, and the left hand has a more active role with eighth-note patterns.

28

Measures 28-32. This section includes a key signature change to one flat (B-flat) in measure 30, indicated by a flat symbol on the bass staff. The right hand has a more melodic focus with some longer note values.

33

Measures 33-37. The right hand features a series of chords and moving lines, while the left hand continues with a rhythmic accompaniment.

38

Measures 38-41. The final system on the page, showing a continuation of the organ's melodic and harmonic themes.

42

Measures 42-45 of the organ piece. The right hand features a complex melodic line with many beamed sixteenth and thirty-second notes, often in a descending pattern. The left hand provides a steady accompaniment with eighth and sixteenth notes, including some chromatic movement.

46

Measures 46-49. The right hand continues with intricate sixteenth-note patterns, including some triplet-like groupings. The left hand maintains a rhythmic accompaniment with eighth notes and some chromatic lines.

50

Measures 50-54. The right hand has a more active melodic line with frequent sixteenth-note runs. The left hand accompaniment consists of eighth notes with some chromatic shifts.

55

Measures 55-60. This section features a significant increase in rests for both hands, creating a more spacious texture. The right hand has occasional chords and short melodic fragments, while the left hand has a few eighth-note lines.

61

Measures 61-64. The right hand returns to a more active melodic role with sixteenth-note patterns. The left hand accompaniment is primarily composed of eighth notes and rests.

# ARIA Organ

4  
65

This system contains measures 65 through 68. The treble clef staff features a complex melodic line with many beamed sixteenth and thirty-second notes, including some grace notes. The bass clef staff provides a harmonic accompaniment with a steady eighth-note pattern and occasional rests.

69

This system contains measures 69 through 73. The treble clef staff continues the intricate melodic texture with dense beaming. The bass clef staff maintains a consistent eighth-note accompaniment, with some measures featuring longer note values.

74

This system contains measures 74 through 76. The treble clef staff shows a continuation of the fast-moving melodic line. The bass clef staff's accompaniment includes some measures with longer note values and rests, creating a rhythmic contrast.

77

This system contains measures 77 through 80. The treble clef staff features a more sustained melodic line with some longer note values. The bass clef staff continues with a steady accompaniment, including some measures with longer note values.

81

This system contains measures 81 through 84. The treble clef staff shows a continuation of the melodic line with some longer note values. The bass clef staff maintains a steady accompaniment, including some measures with longer note values.

86

Measures 86-89 of the organ piece. Measure 86 features a treble staff with a series of chords and a bass staff with a simple accompaniment. Measures 87-89 continue with more complex treble staff patterns, including sixteenth-note runs and chords, while the bass staff remains relatively simple with some rests.

90

Measures 90-94 of the organ piece. Measure 90 shows a treble staff with a dense, flowing sixteenth-note pattern and a bass staff with a simple accompaniment. Measures 91-94 continue with similar treble staff patterns, featuring chords and sixteenth-note runs, while the bass staff provides a steady accompaniment.

95

Measures 95-98 of the organ piece. Measure 95 features a treble staff with a series of chords and a bass staff with a simple accompaniment. Measures 96-98 continue with more complex treble staff patterns, including sixteenth-note runs and chords, while the bass staff remains relatively simple with some rests.