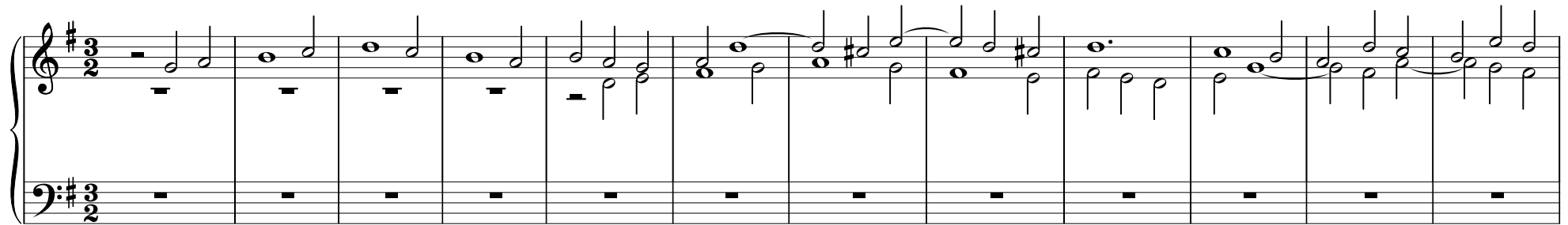


# FUGA SUPER: ALLEIN GOTT IN DER HÖH' SEI EHR'

BWV 716

J. S. Bach (1685 - 1750)



# Fuga super: Allein Gott in der Höh' sei Ehr' / BWV716

The image displays a musical score for a fugue, specifically measures 35 through 52. The score is written for two staves, Treble and Bass, in the key of D major (indicated by two sharps). The time signature is common time (C). The notation includes various musical symbols such as notes, rests, and accidentals. The first system (measures 35-43) shows the right hand playing a complex melodic line with many sixteenth notes, while the left hand has whole rests. The second system (measures 44-52) shows both hands playing, with the right hand continuing the melodic development and the left hand providing harmonic support with longer note values and some sixteenth-note passages. The third system (measures 53-60) shows the right hand with more sixteenth-note runs and the left hand with sustained notes and some sixteenth-note figures.

**Fuga super: Allein Gott in der Höh' sei Ehr' / BWV716**

62

Ped.

71

80