

"Nun komm, der Heiden Heiland" Kantate BWV 62 von Joh. Seb. Bach (1685 - 1750)

Basso-Continuo

5

7

9

11

13

15

17

19

21

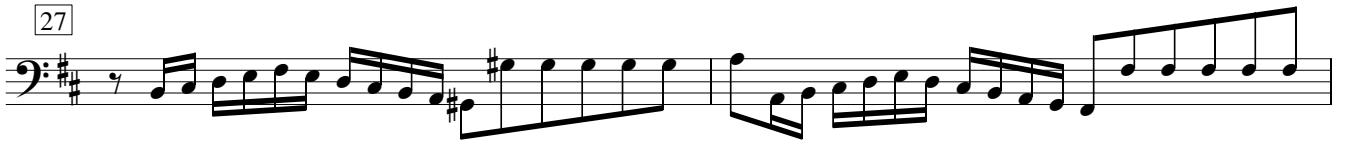
"Nun komm, der Heiden Heiland" Kantate BWV 62 von Joh. Seb. Bach (1685 - 1750)

23

Basso-Continuo



27



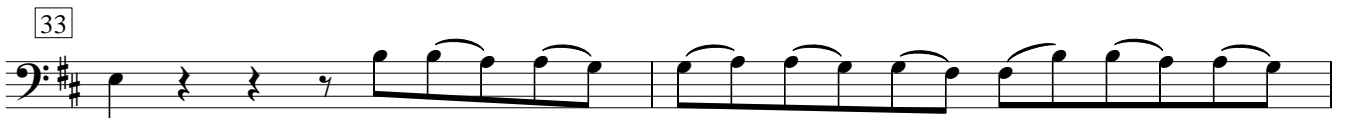
29



31



33



35



37



39



41



43



"Nun komm, der Heiden Heiland" Kantate BWV 62 von Joh. Seb. Bach (1685 - 1750)

Basso-Continuo

45

47

51

53

55

57

59

61

63

65

Da Capo dal Segno