

Fugue in Bb (BWV 532)

Trumpet in C 1

for Brass Quartet

Johann Sebastian Bach (1585-1750)

Arr. Michel Rondeau

Allegro (♩ = circa 100)

13

16

19

23

27

30

35

38

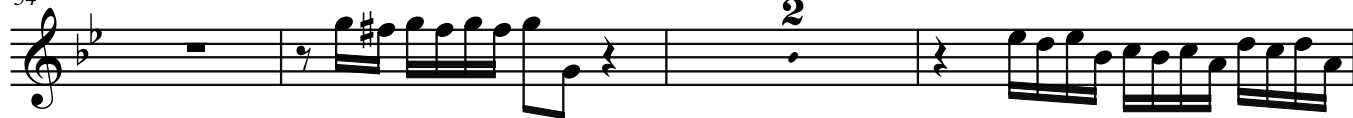
42

46

50



54



59



62



69



73



76



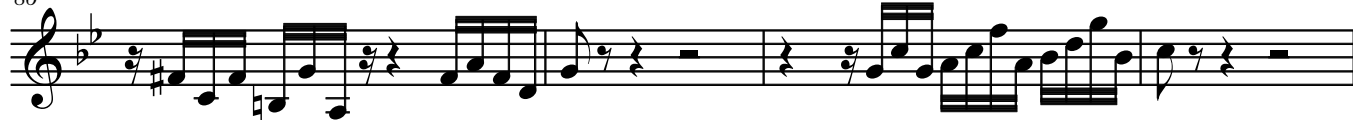
79



83



86



90



94



Fugue in Bb (BWV 532) Trumpet 1

3

98



101



104



107



110



113



116



121



125



129



135

