

Violine 1

Violine 1

4

8

12

16

20

25

28

33

37

43

The image displays the musical score for the first violin part of the Christmas Oratorio, BWV 248, by Johann Sebastian Bach. The score is written for Violine 1 and consists of 43 measures. The key signature is D major (two sharps) and the time signature is 3/4. The notation includes various musical symbols such as treble clef, key signature, time signature, and various note values (quarter, eighth, sixteenth notes). The score is divided into systems, with measure numbers 4, 8, 12, 16, 20, 25, 28, 33, 37, and 43 marked at the beginning of their respective lines. The music features a mix of melodic lines and rhythmic patterns, including some triplet markings (indicated by a '3' over a group of notes) at measures 20, 28, and 33. The score ends with a double bar line at measure 43.

Violine 1

46



49



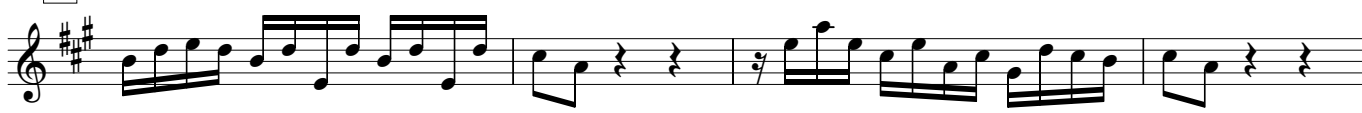
53



57



61



65



69



73



77



80



83



Violine 1

86

89

93

97

Fine

101

105

109

112

116

120

124

*Da Capo
al Fine*