

# Concerto

for Trumpet, Harpsichord & Cello  
(from Kantate BWV 142)

Johann Sebastian Bach (1685-1750)  
Arr. Michel Rondeau

Allegro (♩ = circa 105)

Trumpet in C

Harpsichord

Cello

C Tpt.

Hpschd.

Vc.

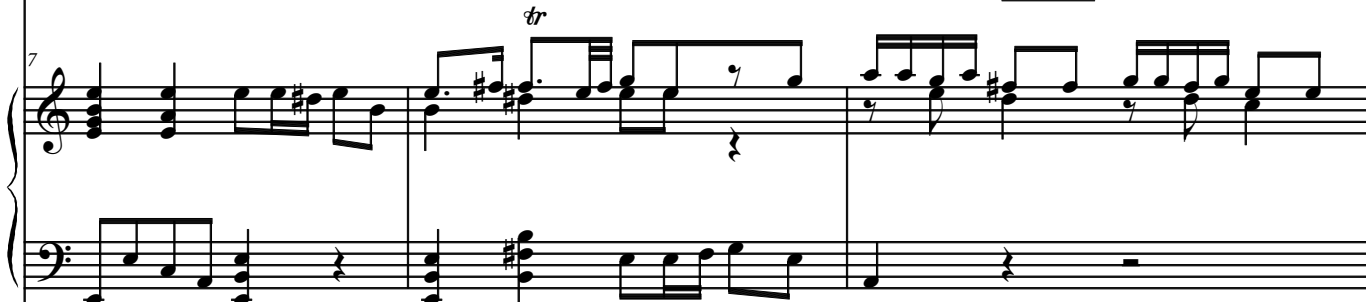
2

## Concerto

C Tpt.



Hpschd.



Vc.



C Tpt.



Hpschd.



Vc.



C Tpt.



Hpschd.



Vc.



16

C Tpt.

Hpschd.

Vc.

Trill (tr) in C Tpt. at measure 17.

20

C Tpt.

Hpschd.

Vc.

Trill (tr) in C Tpt. at measure 20.

23

C Tpt.

Hpschd.

Vc.

27

C Tpt.

Hpschd.

Vc.

31

C Tpt.

Hpschd.

Vc.

Detailed description of the musical score: The score is for three instruments: C Tpt. (Cornet in Treble Clef), Hpschd. (Harp in Grand Staff), and Vc. (Violoncello in Bass Clef). The first system (measures 27-30) shows the C Tpt. playing a melodic line with eighth and sixteenth notes. The Hpschd. provides harmonic support with chords and moving lines in both hands. The Vc. plays a bass line with eighth and sixteenth notes. The second system (measures 31-34) continues the melodic and harmonic development. The C Tpt. has a more active role in measure 31, then rests. The Hpschd. and Vc. continue their respective parts. The score concludes at measure 34 with a final chord and a double bar line.