

Viola

Concerto BWV 1059

J.S.Bach

3

5

7

10

13

16

22

24

27

30

f

p

f

f

p

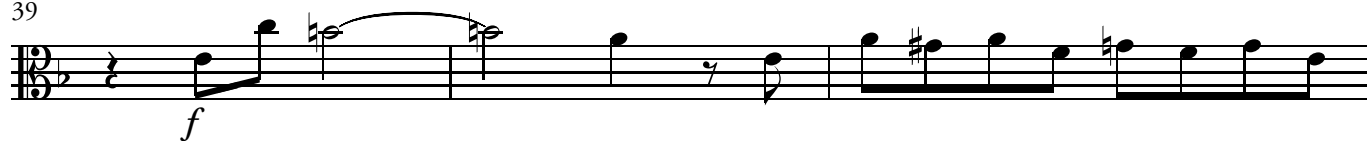
4

3

35



39



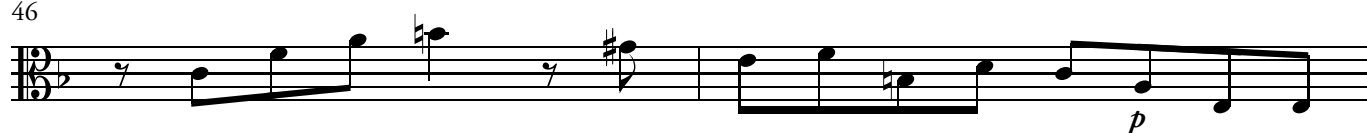
42



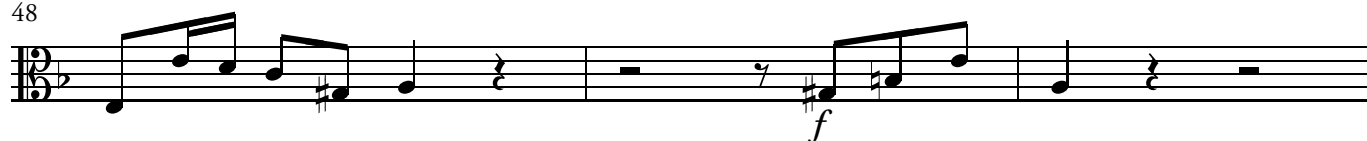
44



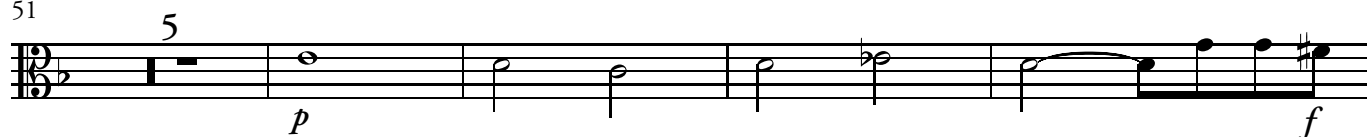
46



48



51



60



62



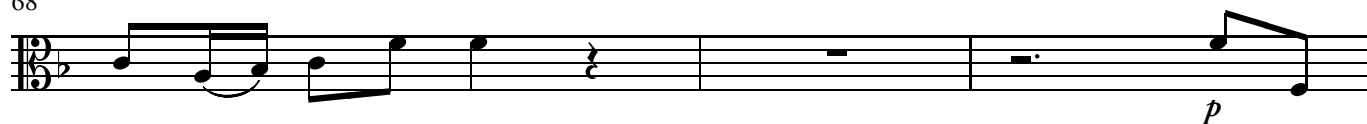
64



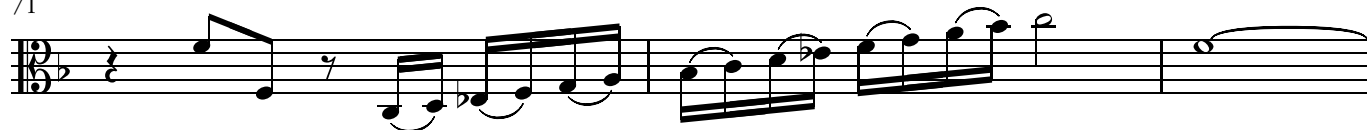
66



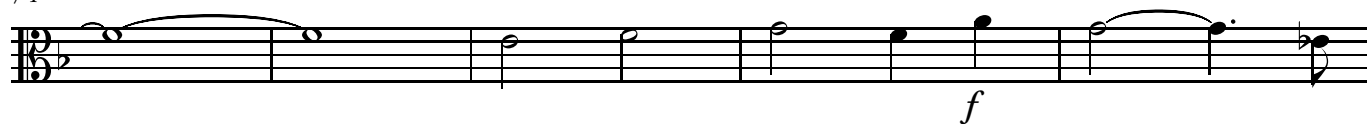
68



71



74



79



81



84



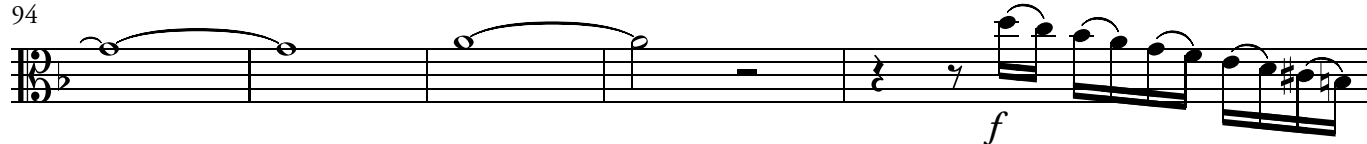
88



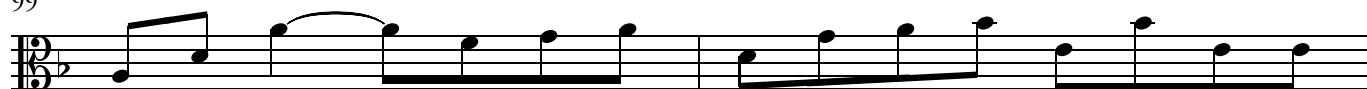
91



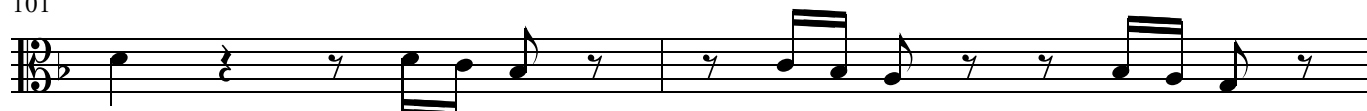
94



99



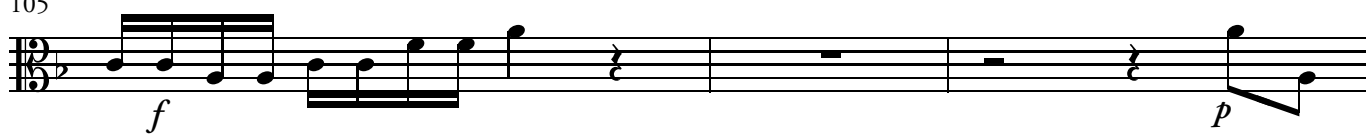
101



103



105



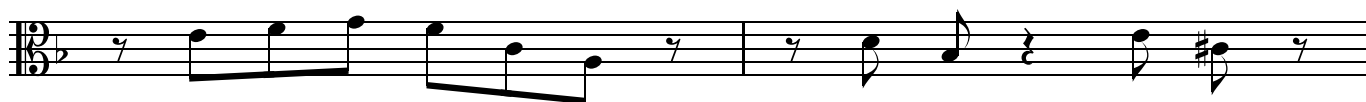
108



110



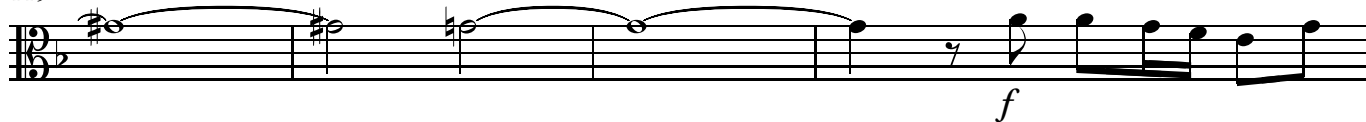
113



115



119



123



125



127



129



Adagio

Measures 1-17 of the Adagio section. The music is in 12/16 time, featuring a melodic line with eighth and sixteenth notes, often beamed together. The key signature has one flat (B-flat). Measure 17 ends with a fermata on a whole note.

Presto

Measures 18-30 of the Presto section. The music is in 3/8 time, characterized by rapid sixteenth-note passages. Measure 22 includes a forte (*f*) dynamic marking. The key signature remains one flat.

37



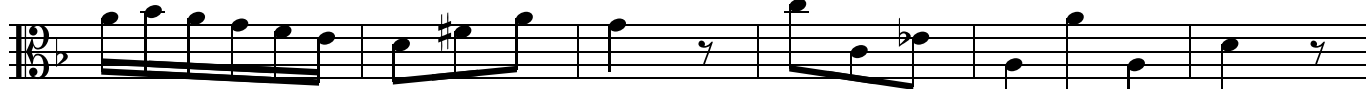
45



53



60



66



73



81



88



95



102



109

