

CANTATA in C

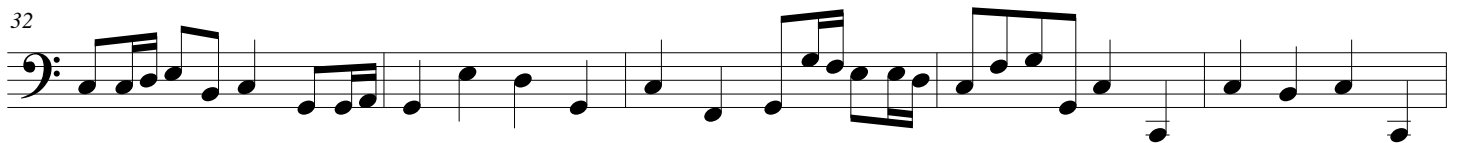
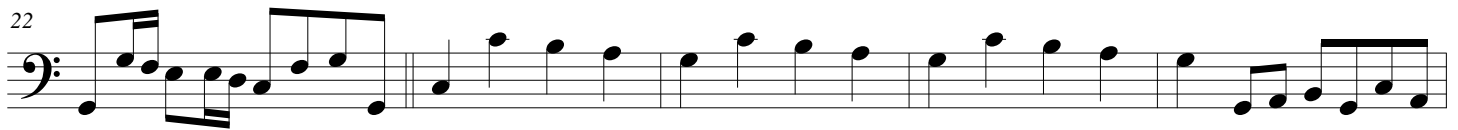
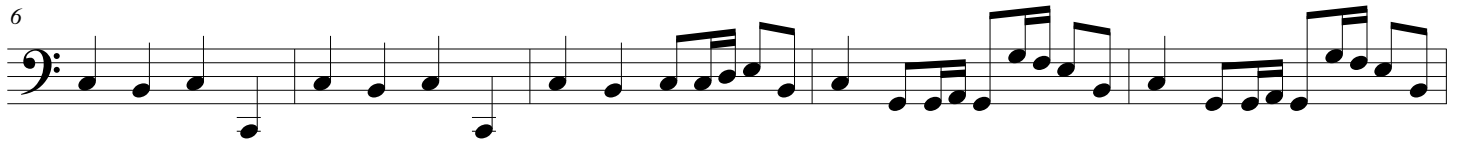
(son ferito d'un labro di ciglio)
for Soprano, Trumpet / Oboe & Organ

Double Bass

Giuseppe Antonio Aldrovandini (1665-1707)

Arr. Michel Rondeau

1 - Allegro ♩ = 90



42



47



52

2 - Quasi Recitativo

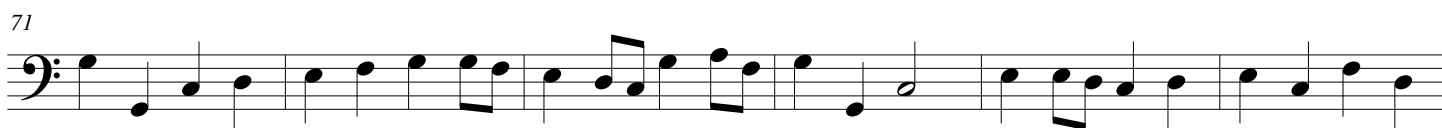
58

3 - Allegro

65



71



77



83



89



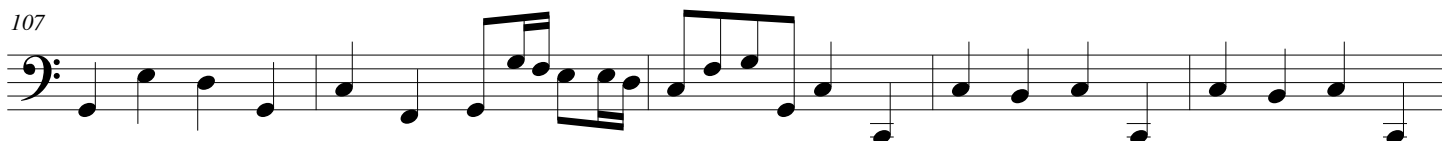
95



101

Allegro

107



112



117



122

