

CONCERTO in Bb

for Trumpet & Organ

I

Tomaso Albinoni (1671-1750)

Arr. Michel Rondeau

Allegro (♩ = circa 90)

Trumpet in C

Organ

This system contains the first three measures of the piece. The Trumpet in C part is written on a single staff in B-flat major (two flats) and 4/4 time. It begins with a quarter rest, followed by a series of eighth and sixteenth notes. The Organ part is written on a grand staff (treble and bass clefs). The right hand plays chords and moving lines, while the left hand plays a steady eighth-note accompaniment.

C Tpt.

Org.

This system contains measures 4 through 6. The C Trumpet part continues with eighth and sixteenth notes. The Organ part features more complex chordal textures in the right hand and continues the eighth-note accompaniment in the left hand.

C Tpt.

Org.

This system contains measures 7 through 10. In measure 7, the C Trumpet part has a whole rest. The Organ part continues with its characteristic textures. In measure 10, there is a trill (tr) in the Organ's right hand.

C Tpt. 11

Org. 11

Measures 11-14. The C Tpt. part features a continuous eighth-note melody. The Organ part has a complex texture with chords and moving lines in both staves.

C Tpt. 14

Org. 14

Measures 14-17. The C Tpt. part has a trill on measure 14 followed by rests. The Organ part continues with its complex texture.

C Tpt. 18

Org. 18

Measures 18-21. The C Tpt. part has rests for the first two measures, then enters with a melody. The Organ part continues with its complex texture.

CONCERTO in Bb

3

21

C Tpt.

Org.

Measures 21-23. The C Tpt. part features a melodic line with eighth and sixteenth notes. The Organ part has a complex texture with chords and moving lines in both staves.

24

C Tpt.

Org.

Measures 24-26. The C Tpt. part continues with a melodic line. The Organ part features a dense chordal texture in the right hand and a moving bass line.

27

C Tpt.

Org.

Measures 27-29. The C Tpt. part has a melodic line with some sixteenth-note passages. The Organ part has a steady bass line and chords in the right hand.

29

C Tpt.

Org.

Measures 29-32. The C Tpt. part features a melodic line with eighth and sixteenth notes, ending with a trill. The Org. part has a busy texture with sixteenth-note runs in the right hand and eighth-note patterns in the left hand.

33

C Tpt.

Org.

Measures 33-35. The C Tpt. part has a melodic line with eighth and sixteenth notes. The Org. part continues with a complex texture of sixteenth-note runs in the right hand and eighth-note patterns in the left hand.

36

C Tpt.

Org.

Measures 36-38. The C Tpt. part has a melodic line with eighth and sixteenth notes. The Org. part continues with a complex texture of sixteenth-note runs in the right hand and eighth-note patterns in the left hand.

39

C Tpt.

Org.

39

40

41

42

C Tpt.

Org.

42

43

44

45

C Tpt.

Org.

45

46

47

48

C Tpt.

Org.

Measures 48-50. The C Tpt. part has whole rests. The Org. part features a complex melody with trills in measures 49 and 50.

51

C Tpt.

Org.

Measures 51-53. The C Tpt. part has whole rests. The Org. part features a complex melody with triplets in measures 52 and 53.

54

C Tpt.

Org.

Measures 54-56. The C Tpt. part has whole rests. The Org. part features a complex melody with eighth-note patterns in measures 54 and 55.

56

C Tpt.

Org.

Measures 56-57. The C Tpt. part has whole rests. The Org. part features a complex texture with sixteenth-note runs in the right hand and eighth-note patterns in the left hand.

58

C Tpt.

Org.

Measures 58-60. The C Tpt. part has whole rests in measures 58 and 59, followed by a quarter note and eighth notes in measure 60. The Org. part continues with intricate sixteenth-note and eighth-note patterns.

61

C Tpt.

Org.

Measures 61-63. The C Tpt. part has a melodic line in measure 61 and rests in measures 62 and 63. The Org. part features dense chordal textures and moving lines in both hands.

C Tpt.

Org.

64

64

C Tpt.

Org.

67

67

C Tpt.

Org.

70

70

CONCERTO in Bb

9

73

C Tpt.

Org.

Measures 73-75. The C Tpt. part features a melodic line with eighth and sixteenth notes. The Organ part has a complex texture with chords and moving lines in both staves.

76

C Tpt.

Org.

Measures 76-78. The C Tpt. part includes a trill (tr) in measure 76. The Organ part continues with intricate chordal and melodic patterns.

79

C Tpt.

Org.

Measures 79-81. The C Tpt. part has rests in measures 80 and 81. The Organ part features dense sixteenth-note passages in measures 79 and 80.

10

CONCERTO in Bb

82

C Tpt.



Org.

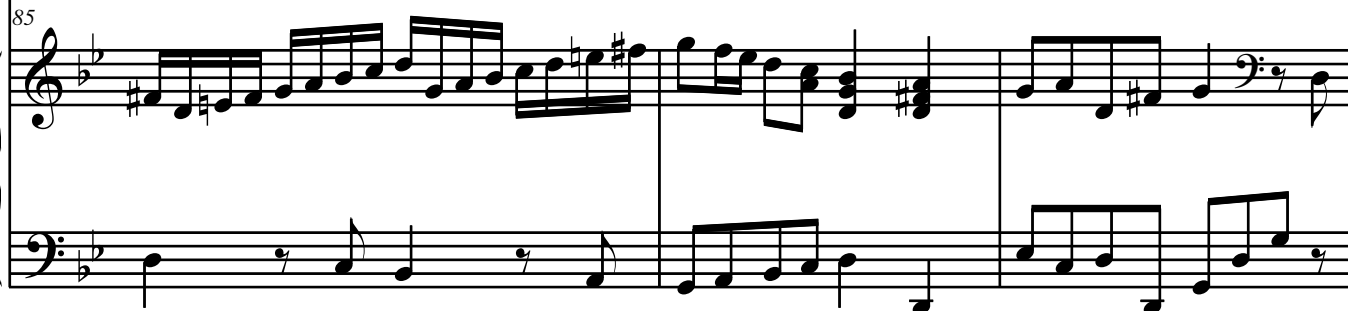


85

C Tpt.

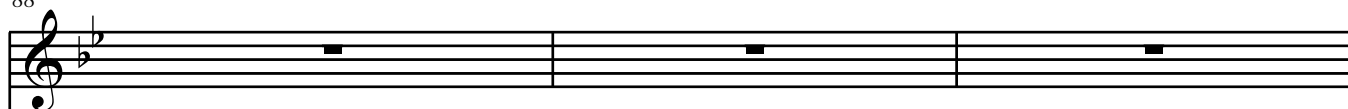


Org.

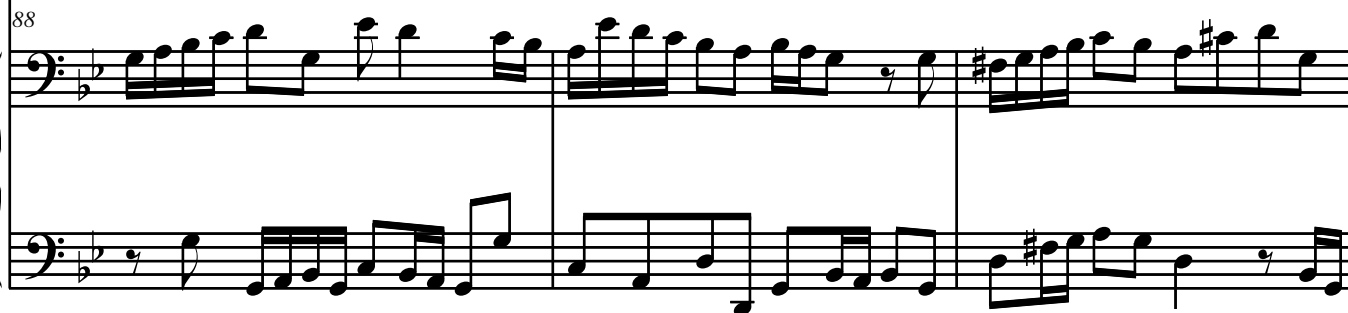


88

C Tpt.



Org.



91

C Tpt.

Org.

Measures 91-93: The C Tpt. part has whole rests. The Org. part features a complex texture with sixteenth-note runs in the right hand and eighth-note patterns in the left hand.

94

C Tpt.

Org.

Measures 94-95: The C Tpt. part has whole rests. The Org. part features a complex texture with sixteenth-note runs in the right hand and eighth-note patterns in the left hand.

96

C Tpt.

Org.

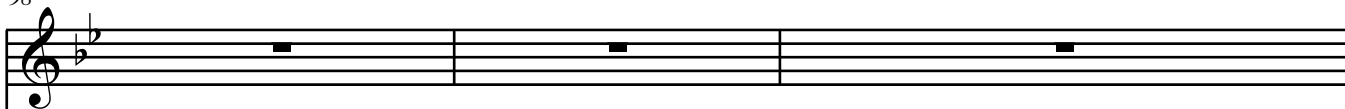
Measures 96-98: The C Tpt. part has whole rests. The Org. part features a complex texture with sixteenth-note runs in the right hand and eighth-note patterns in the left hand.

12

CONCERTO in Bb

98

C Tpt.

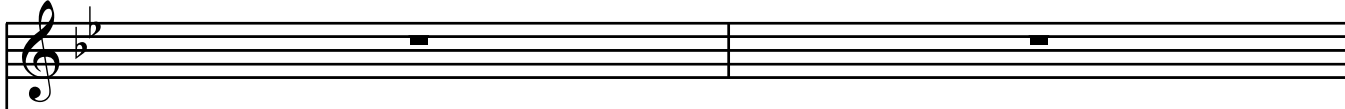


Org.

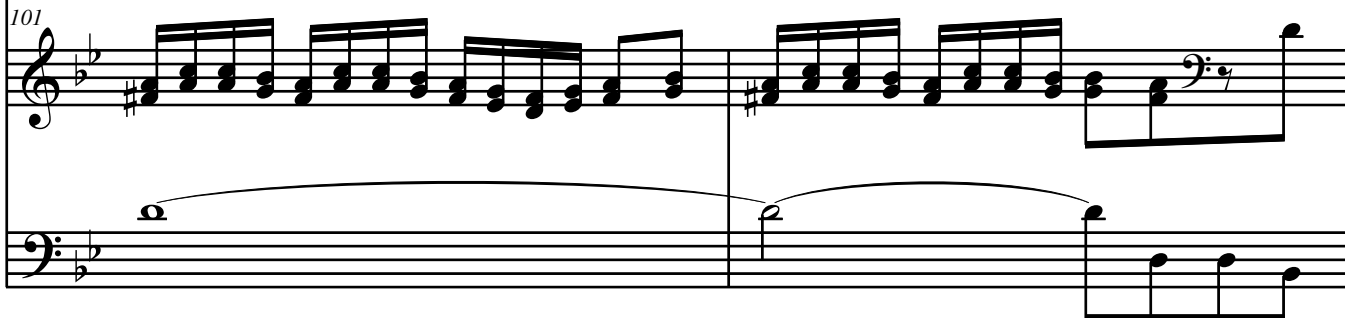


101

C Tpt.

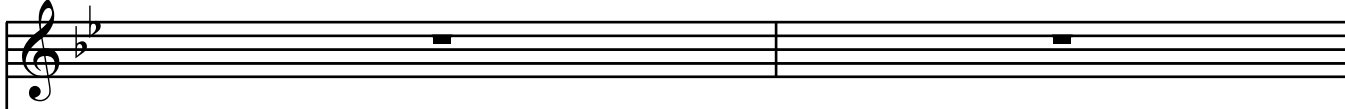


Org.

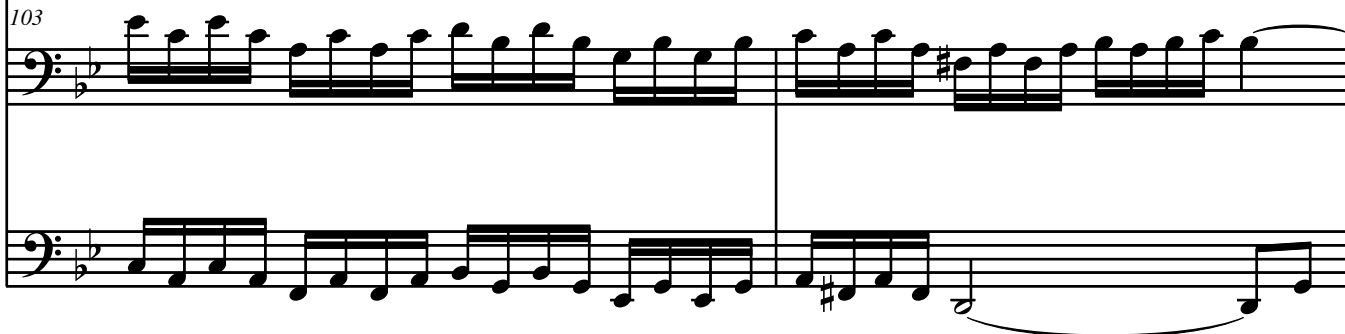


103

C Tpt.



Org.



105

C Tpt.

Org.

Measures 105-107. The C Tpt. part has rests in measures 105 and 106, followed by a quarter note in measure 107. The Org. part features a complex texture with sixteenth-note runs in the right hand and eighth-note patterns in the left hand, including a chromatic descending line in measure 107.

108

C Tpt.

Org.

Measures 108-110. The C Tpt. part plays a continuous sixteenth-note pattern. The Org. part has a rhythmic accompaniment with chords in the right hand and eighth-note patterns in the left hand.

111

C Tpt.

Org.

Measures 111-113. The C Tpt. part continues with a sixteenth-note pattern. The Org. part features a more active right hand with sixteenth-note runs and a steady eighth-note accompaniment in the left hand.

C Tpt.

Org.

114

Measures 114-117. The C Tpt. part has whole rests. The Org. part features a complex texture with sixteenth-note runs in the right hand and eighth-note patterns in the left hand.

C Tpt.

Org.

118

Measures 118-120. The C Tpt. part has a continuous sixteenth-note run. The Org. part has a steady eighth-note accompaniment in the left hand and chords with sixteenth-note runs in the right hand.

C Tpt.

Org.

121

Measures 121-123. The C Tpt. part ends with a trill on a half note. The Org. part has a descending eighth-note line in the left hand and chords in the right hand.