

Fuga

Alessandro SCARLATTI
(1659-1725)

Édition de P. Gouin

5

9

13

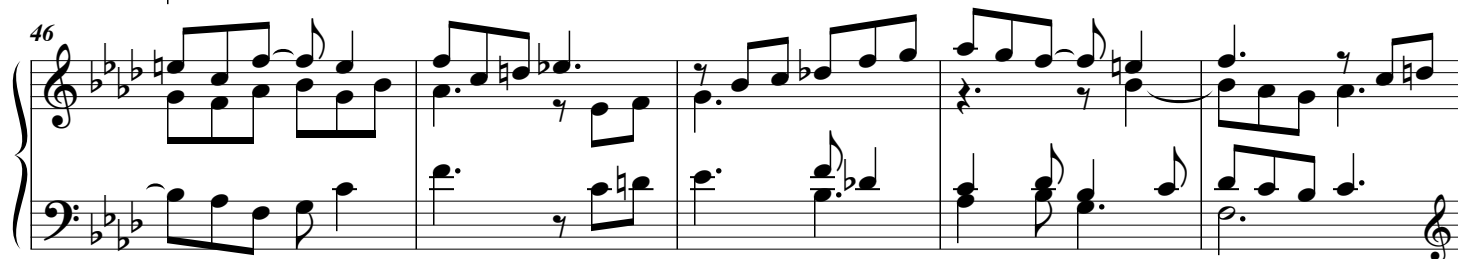
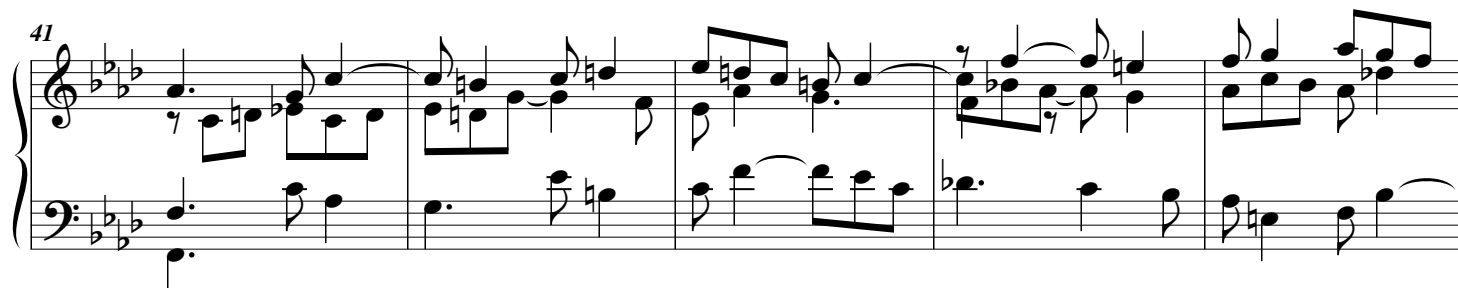
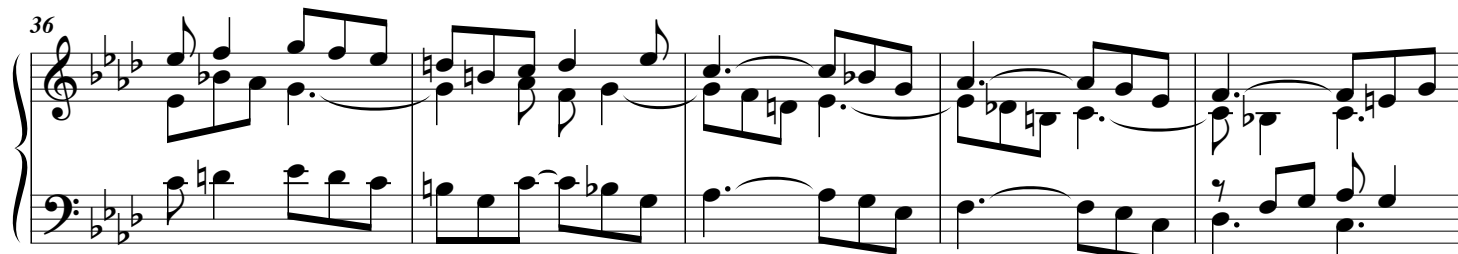
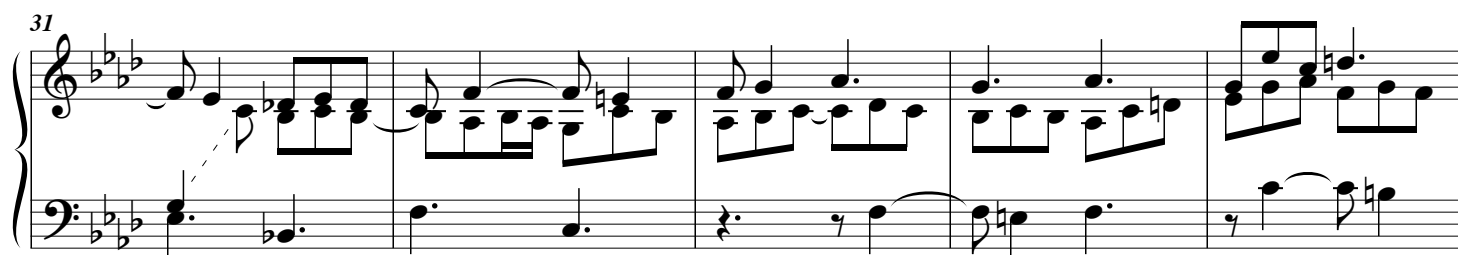
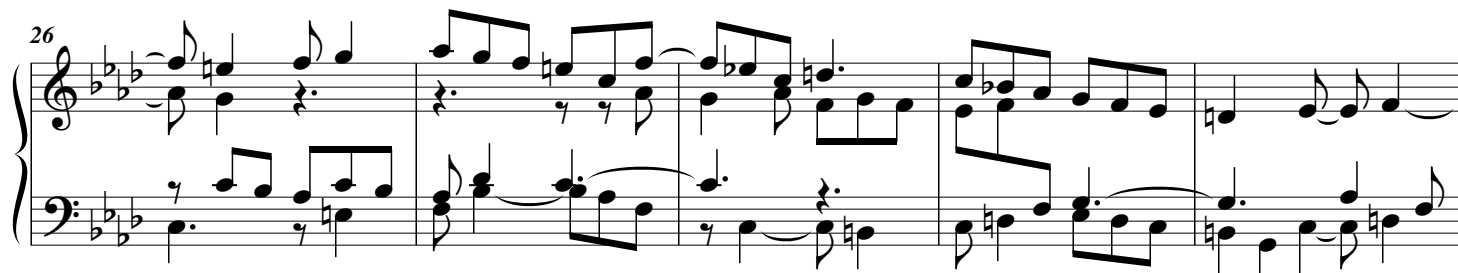
17

tr

tr

tr

tr



51

System 51-55: Treble and bass staves in B-flat major. Treble staff features a trill (tr) on the fifth measure. The system contains five measures of music.

56

System 56-60: Treble and bass staves in B-flat major. The system contains five measures of music.

61

System 61-65: Treble and bass staves in B-flat major. Treble staff features a trill (tr) on the fifth measure. The system contains five measures of music.

66

System 66-70: Treble and bass staves in B-flat major. The system contains five measures of music.

71

System 71-75: Treble and bass staves in B-flat major. The system contains five measures of music.

75

System 75-79: Treble and bass staves in B-flat major. Treble staff features a trill (tr) on the third measure. The system contains five measures of music.

80

System 80-84: Treble and bass staves. Treble staff has a melodic line with eighth and sixteenth notes, often beamed together. Bass staff has a more rhythmic accompaniment with quarter and eighth notes. The key signature has three flats.

85

System 85-88: Continuation of the musical piece. Treble staff features a melodic line with some ties. Bass staff continues the accompaniment. The key signature remains three flats.

89

System 89-92: Treble staff has a melodic line with a trill (tr) marked in the bass staff. The key signature has three flats.

93

System 93-96: Treble staff has a melodic line with some ties. Bass staff continues the accompaniment. The key signature has three flats.

97

System 97-101: Treble staff has a melodic line with some ties. Bass staff continues the accompaniment. The key signature has three flats.

102

System 102-105: Treble staff has a melodic line with some ties. Bass staff continues the accompaniment. The key signature has three flats. The system ends with a double bar line.