

ARIA

4-Rompe Sprezza

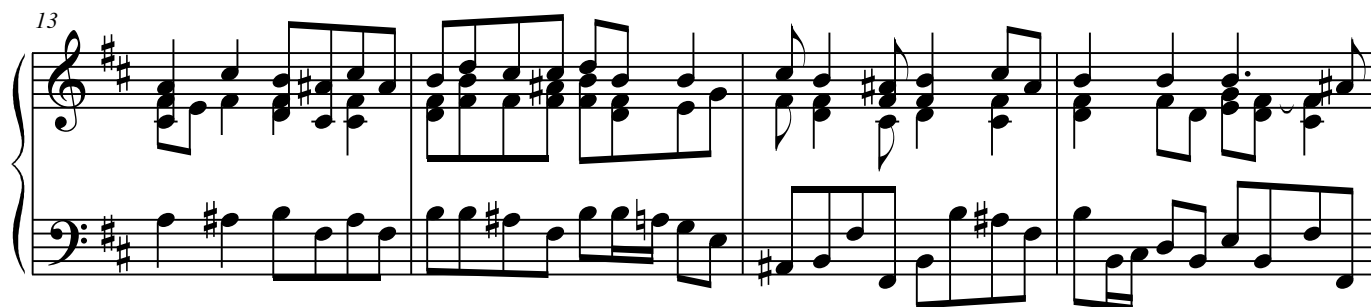
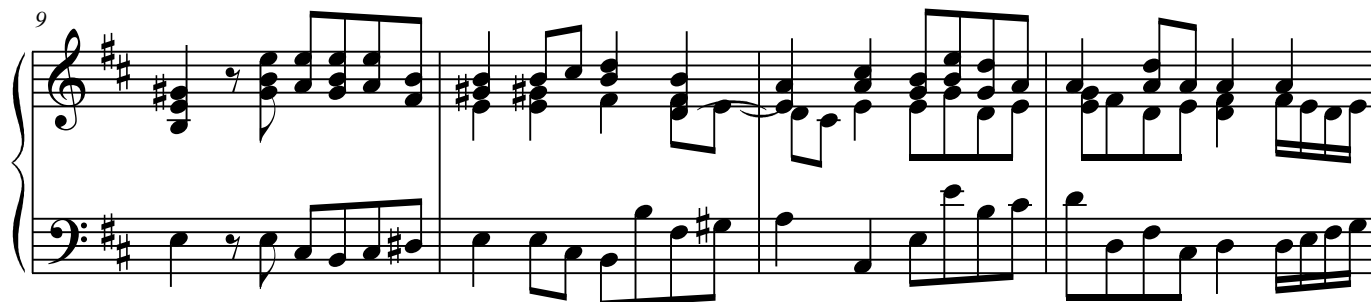
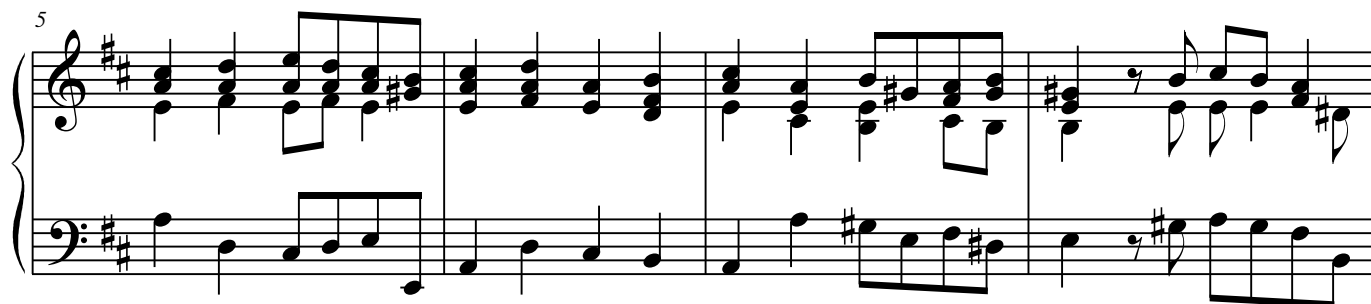
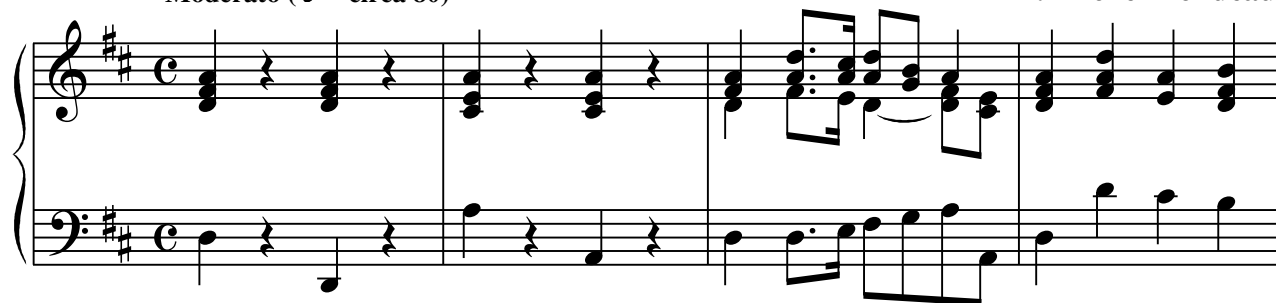
for Soprano, Trumpet, Strings & Continuo

Harpsichord

Alessandro Scarlatti (1660 - 1725)

Arr. Michel Rondeau

Moderato (♩ = circa 80)



17

Measures 17-19 of the ARIA Harpsichord piece. The key signature is two sharps (F# and C#). The melody in the treble clef consists of eighth and quarter notes, often beamed together. The bass line features a steady eighth-note accompaniment. Measure 19 ends with a repeat sign.

20

Measures 20-22 of the ARIA Harpsichord piece. The melody continues with eighth and quarter notes. The bass line maintains the eighth-note accompaniment. Measure 22 ends with a repeat sign.

23

Measures 23-25 of the ARIA Harpsichord piece. The melody continues with eighth and quarter notes. The bass line maintains the eighth-note accompaniment. Measure 25 ends with a final cadence, marked by a double bar line and repeat dots.